

# Slides Threaten Point Cabrillo Drive



Hwy 1

RV Park & Campground

Point Cabrillo Drive

Slides

Caspar Beach

Point Cabrillo Drive Hillside Failure

# Location: Caspar Beach



RV Park &  
Campground

Point Cabrillo Drive (Old Hwy 1)

**2024 Slide (Road View)**



**2024 Slide**



**2022 Slide Beach View**



April 2024 Slide



April 2024 Rock Failure



# Introduction

- Location
- Who is Affected?
- Why is this important?
  - Public Safety
  - Economic Impacts
  - Timeframe to resolve the problem
  - Funding

# Who is affected

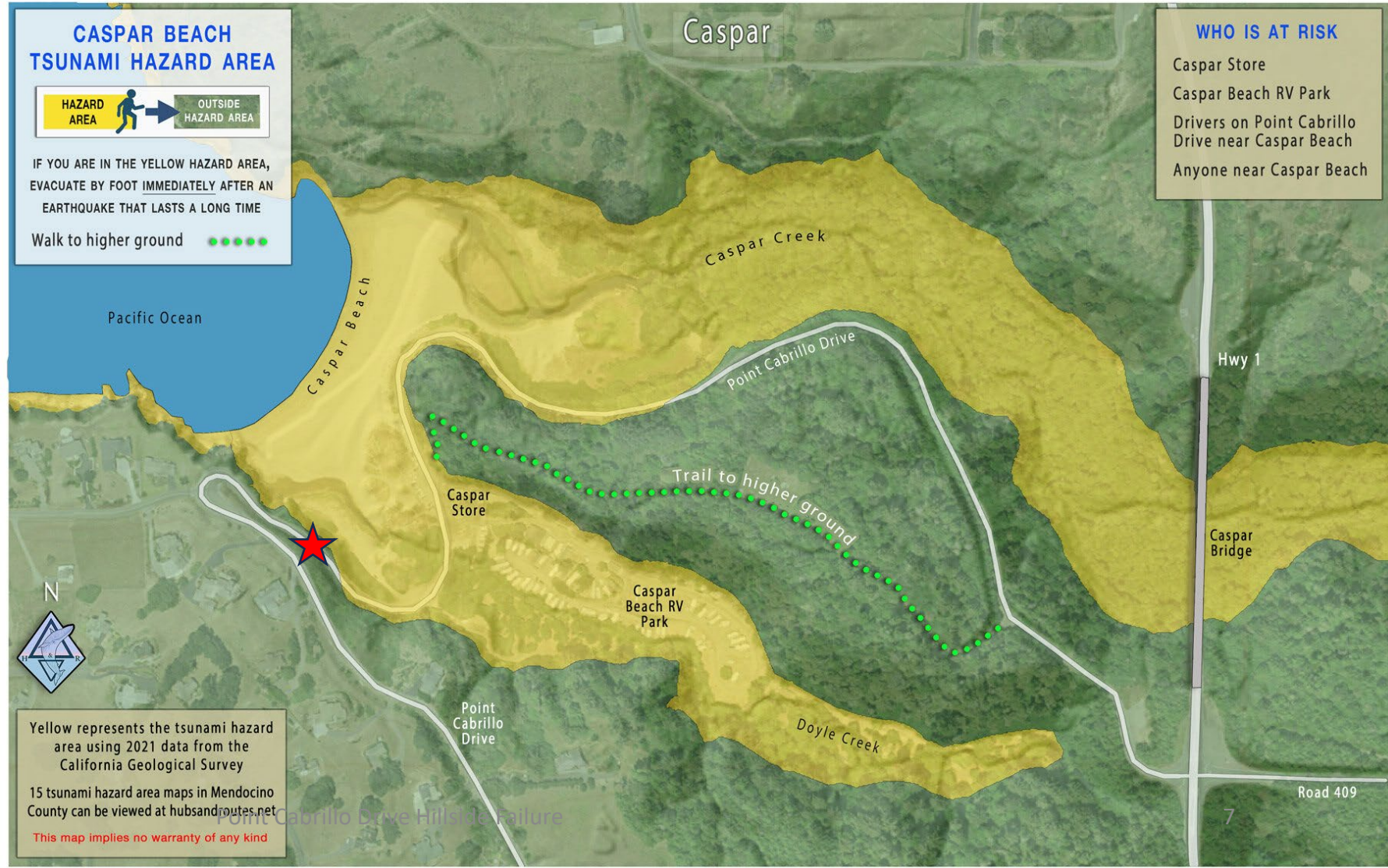
- Over 300 households along Point Cabrillo Drive, 120 site campground at Caspar Beach and 25-30 active vacation rentals.
- Tradesmen, School and County Buses, Fuel and other delivery services.
- We have a Petition with 88 signatures urging the county to urgently address this problem.

# Why is this important



## Public Safety: *Tsunami Risk*

- Campground and Beach area with parking are all in the Tsunami zone.
- Other Risks: Tsunami, Fires, Earthquakes, Fallen trees and power lines
- A Tsunami occurring in Oregon could reach our area in 15-30 minutes.
- Similarly, an Alaskan Tsunami could reach us in 2-3 hours
- Fires and storms could block either of existing exits onto Hwy 1
- **Two alternate emergency escape routes onto Hwy 1 must be maintained.**



### CASPAR BEACH TSUNAMI HAZARD AREA



IF YOU ARE IN THE YELLOW HAZARD AREA,  
EVACUATE BY FOOT IMMEDIATELY AFTER AN  
EARTHQUAKE THAT LASTS A LONG TIME  
Walk to higher ground ●●●●●

**WHO IS AT RISK**  
Caspar Store  
Caspar Beach RV Park  
Drivers on Point Cabrillo  
Drive near Caspar Beach  
Anyone near Caspar Beach

Yellow represents the tsunami hazard area using 2021 data from the California Geological Survey  
15 tsunami hazard area maps in Mendocino County can be viewed at [hubsandrout.es.net](http://hubsandrout.es.net)  
This map implies no warranty of any kind

# Why is this important: Cliff Failure next to Point Cabrillo Drive





# Why is this important to fund Planning Grant

- **Economic Impact**
  - Number of businesses rely on convenient road access.
  - Campground
  - Point Cabrillo State Park
  - Limited Agriculture businesses
  - Trades people/businesses servicing local residents
  - School buses
  
- **Timing?**
  - What is the timeline for resolving this project?
  - We consider this a very urgent issue.
  - What happens if there is a disaster before we have resolution?
  
- 
- **Funding**
  - Climate Adaption Grant application submitted --thanks to Don Gjerde, Bernie Norvelle, Ted Williams and others— to fund a planning process
    - Select and hire appropriate consultants.
    - Identify options with public comment.
    - Conduct engineering surveys
    - Develop preliminary budgets for each option.
    - Develop preliminary outline workplans/schedule for next steps