

MENDOCINO COUNCIL OF GOVERNMENTS & CALTRANS
 COVELO / ROUND VALLEY NON-MOTORIZED NEEDS ASSESSMENT & EFS

CONCEPTUAL STATE ROUTE 162 CLASS I TRAIL IMPROVEMENT PLANS

OCTOBER 2013

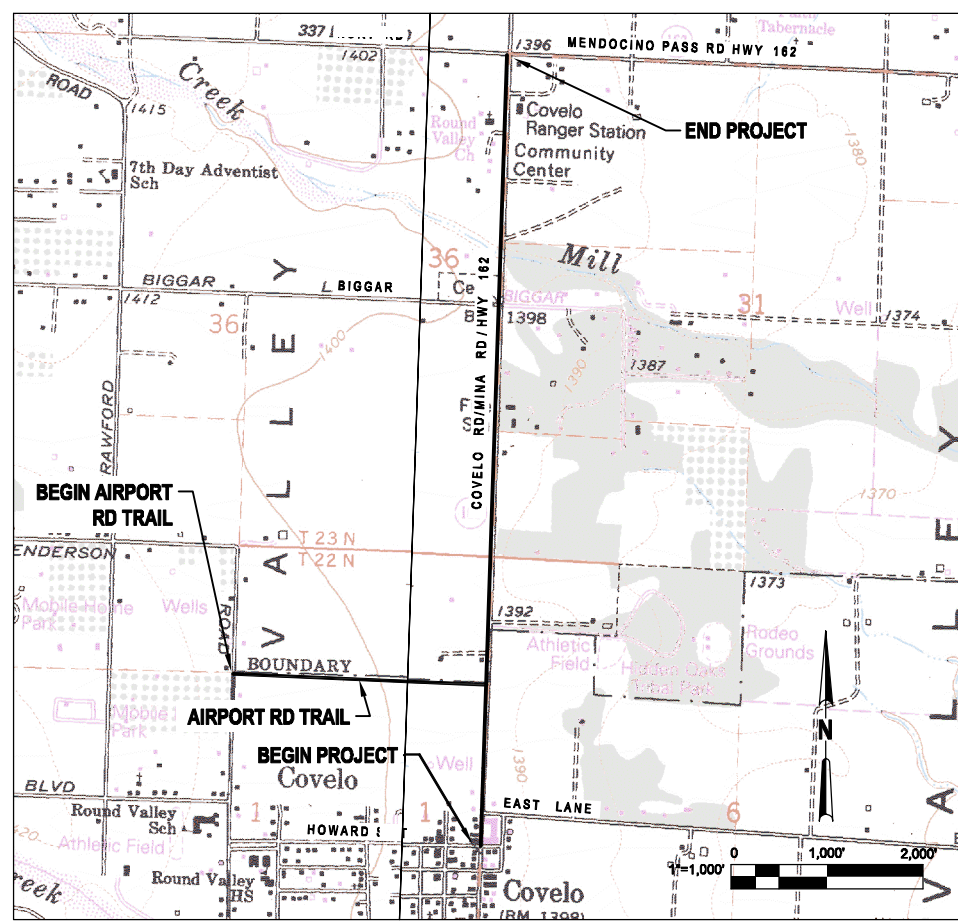
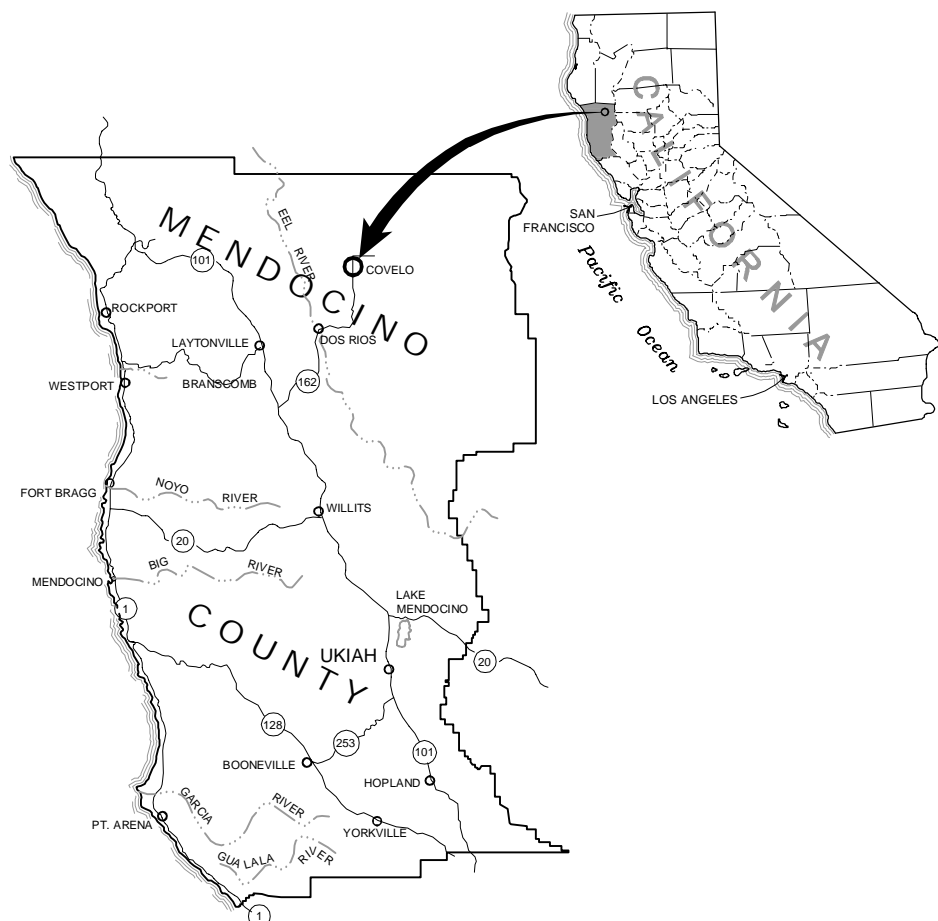
PREPARED BY



AREA MAP

LOCATION MAP

SHEET INDEX



SHEET NO.	DRAWING	DESCRIPTION
GENERAL		
1	1	COVER SHEET
TRAIL PLANS - HIGHWAY 162		
2	2	DRAFT TRAIL ALIGNMENT LAYOUT HOWARD STREET TO STA 18+00
3	3	DRAFT TRAIL ALIGNMENT LAYOUT STA 18+00 TO STA 39+00
4	4	DRAFT TRAIL ALIGNMENT LAYOUT STA 39+00 TO STA 61+00
5	5	DRAFT TRAIL ALIGNMENT LAYOUT STA 61+00 TO HURT ROAD
TRAIL PLANS - EAST-WEST TRAIL		
6	6	DRAFT TRAIL ALIGNMENT LAYOUT HENDERSON LANE TO STA 21+50
7	7	DRAFT TRAIL ALIGNMENT LAYOUT STA 21+50 TO HIGHWAY 162
SECTIONS		
8	8	TYPICAL CROSS SECTIONS
9	9	TYPICAL CROSS SECTIONS

No	Revision	Note: * indicates signatures on original issue of drawing or test revision of drawing	Drawn	Job Manager	Project Director	Date

Reuse of Documents
 This document and the ideas and designs incorporated herein, as an instrument of professional service, is the property of GHD Inc. and shall not be reused in whole or in part for any other project without GHD Inc.'s written authorization. © GHD Inc. 2012

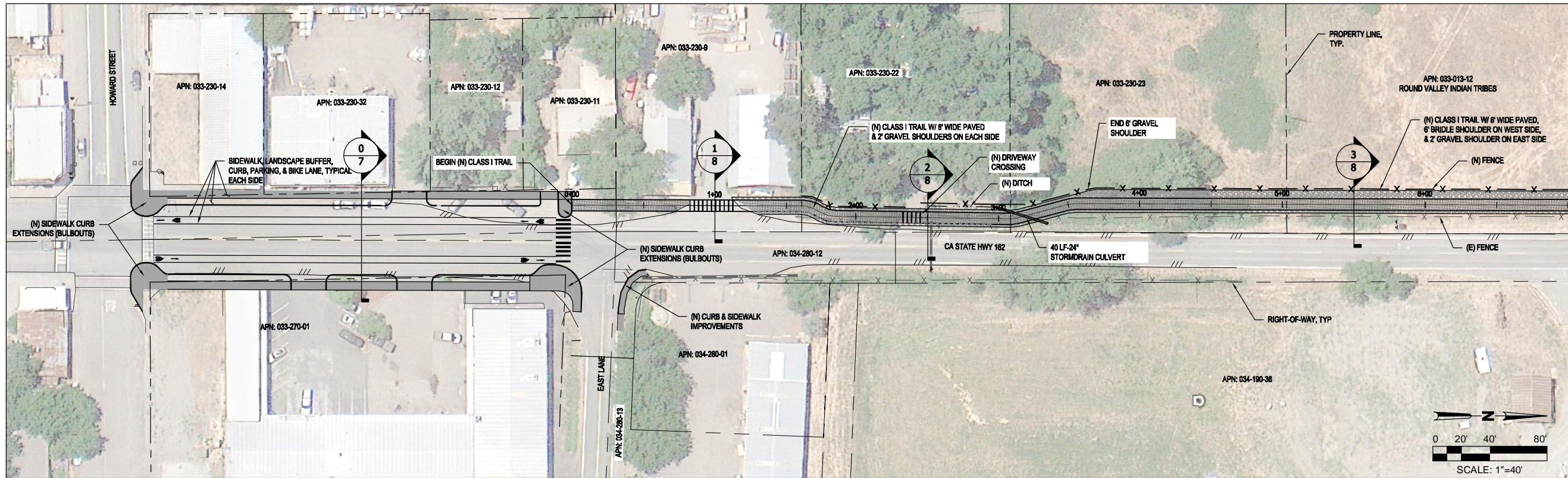
FOR REVIEW ONLY

DRAFT



Drawn: SJD	Designer: JJW
Drafting Check: JS	Design Check: MAP
Approved (Project Director):	Date:
Scale: ASSHOWN	This Drawing shall not be used for Construction unless Signed and Sealed For Construction

Client: MENDOCINO COUNCIL OF GOVERNMENTS & CALTRANS	Project: COVELO / ROUND VALLEY NON-MOTORIZED NEEDS ASSESSMENT & EFS
Title: COVER SHEET	Contract No. 8410146
Original Size: Ansi D	Drawing No: 1
Sheet: 1 of 9	Rev:



LEGEND

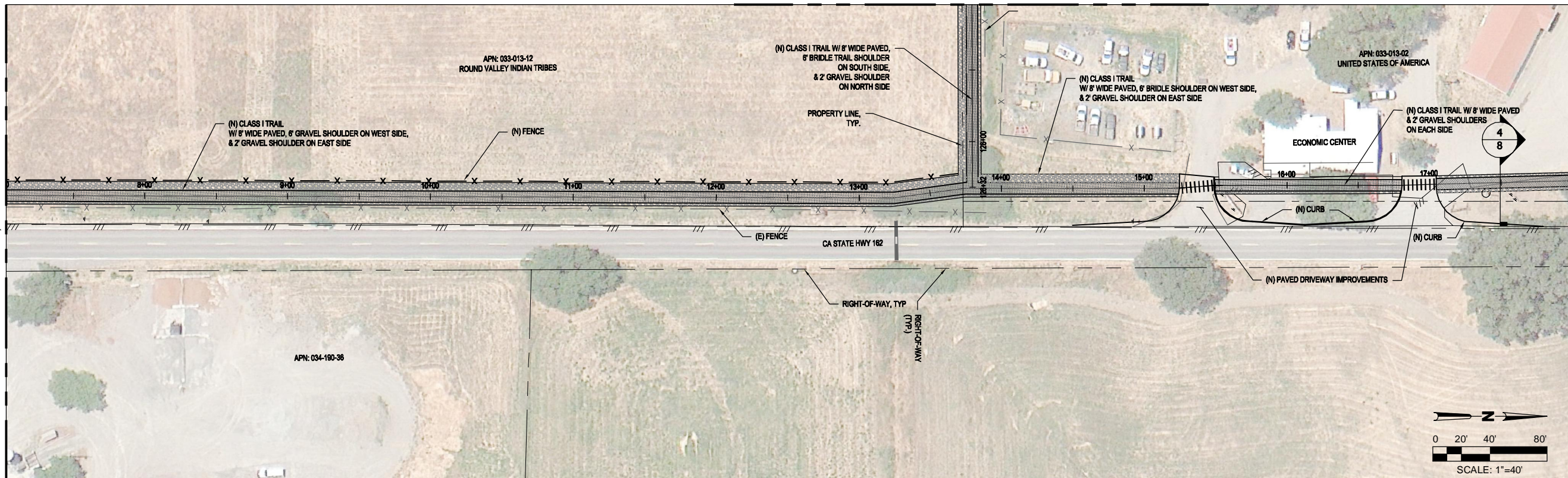
	(N) CURB
	(N) SIDEWALK/ CONCRETE
	(N) CLASS II BIKE LANE
	(N) CLASS 1 TRAIL
	(N) HIGH VISIBILITY CROSSING
	(N) SIGN
	(N) FENCE
	(E) FENCE
	(E) EDGE OF PAVEMENT
	(E) DITCH
	(N) DITCH

SURVEY NOTES

TOPOGRAPHIC SURVEY, RIGHT-OF-WAY, PROPERTY LINES, OWNERSHIP AND EXISTING FEATURES BY RAU & ASSOCIATES. SEE SURVEY DATED MARCH 2013 FOR DETAILS NOT SHOWN HERE.

MATCH LINE STA 7+00, SEE PANEL BELOW

MATCH LINE STA 127+00, SEE DRAWING NO.7



MATCH LINE STA 7+00, SEE PANEL ABOVE

MATCH LINE STA 18+00, SEE DRAWING NO. 3

No	Revision	Note	Drawn	Job Manager	Project Director	Date

Reuse of Documents
 This document and the ideas and designs incorporated herein, as an instrument of professional service, is the property of GHD Inc. and shall not be reused in whole or in part for any other project without GHD Inc.'s written authorization. © GHD Inc. 2012

FOR REVIEW ONLY

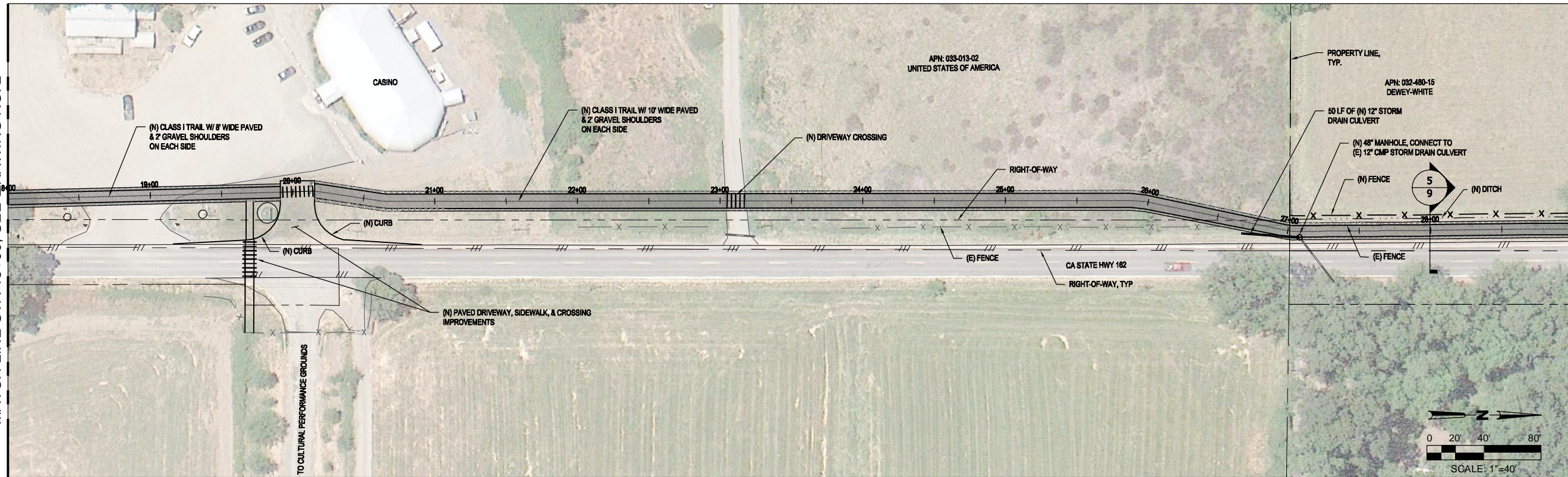
DRAFT

GHD Inc.
 718 Third Street Eureka California 95501 USA
 T 1 707 443 8326 F 1 707 444 8330
 W www.ghd.com

Drawn	JJW	Designer	JJW
Drafting	MP	Design	MP
Check		Check	
Approved	(Project Director)		
Date			
Scale	AS SHOWN	This Drawing shall not be used for Construction unless Signed and Sealed For Construction	

Client **MENDOCINO COUNCIL OF GOVERNMENTS & CALTRANS**
 Project **COVELO / ROUND VALLEY NON-MOTORIZED NEEDS ASSESSMENT & EFS**
 Title **HIGHWAY 162 DRAFT TRAIL ALIGNMENT LAYOUT**
 Contract No. 8410146
 Original Size **Ansi D** Drawing No: **2**
 Site **2** of **9**
 Rev:

MATCH LINE STA 18+00, SEE DRAWING NO. 2

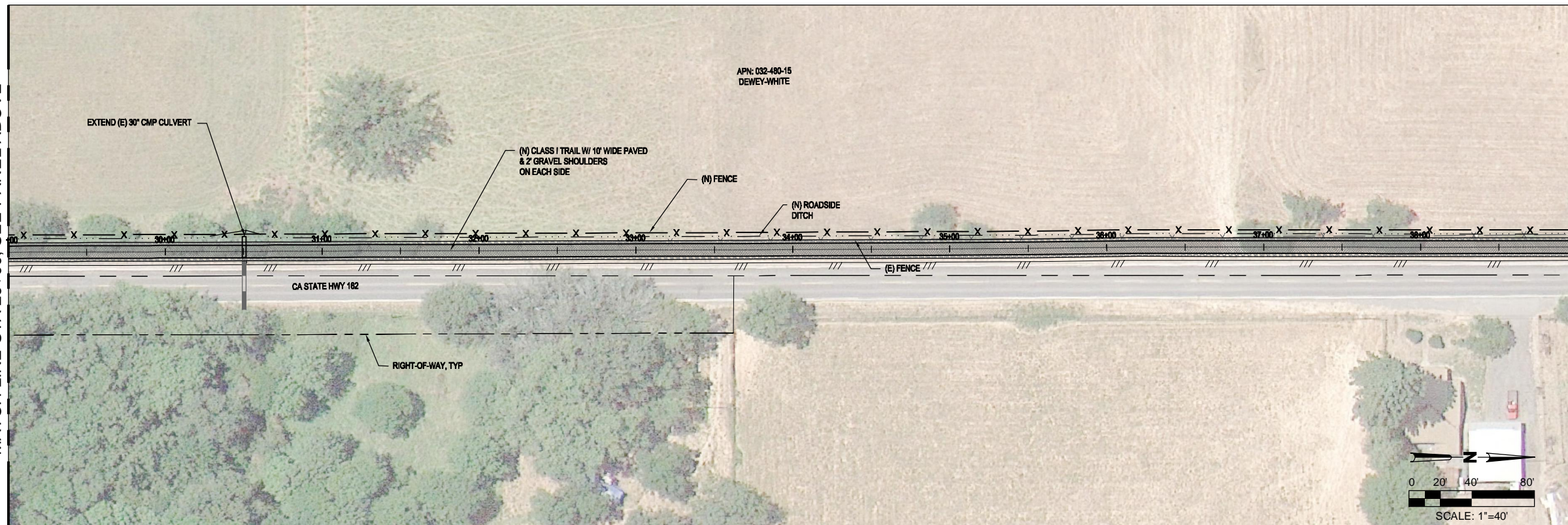


MATCH LINE STA 29+00, SEE PANEL BELOW

LEGEND	
	(N) CURB
	(N) SIDEWALK/ CONCRETE
	(N) CLASS II BIKE LANE
	(N) CLASS I TRAIL
	(N) HIGH VISIBILITY CROSSING
	(N) SIGN
	(N) FENCE
	(E) FENCE
	(E) EDGE OF PAVEMENT
	(E) DITCH
	(N) DITCH

SURVEY NOTES	
TOPOGRAPHIC SURVEY, RIGHT-OF-WAY, PROPERTY LINES, OWNERSHIP AND EXISTING FEATURES BY RAU & ASSOCIATES. SEE SURVEY DATED MARCH 2013 FOR DETAILS NOT SHOWN HERE.	

MATCH LINE STA 29+00, SEE PANEL ABOVE



MATCH LINE STA 39+00, SEE DRAWING NO. 4

No	Revision	Note	Drawn	Job Manager	Project Director	Date
-	-	-	-	-	-	-

Reuse of Documents
 This document and the ideas and designs incorporated herein, as an instrument of professional service, is the property of GHD Inc. and shall not be reused in whole or in part for any other project without GHD Inc.'s written authorization. © GHD Inc. 2012

FOR REVIEW ONLY

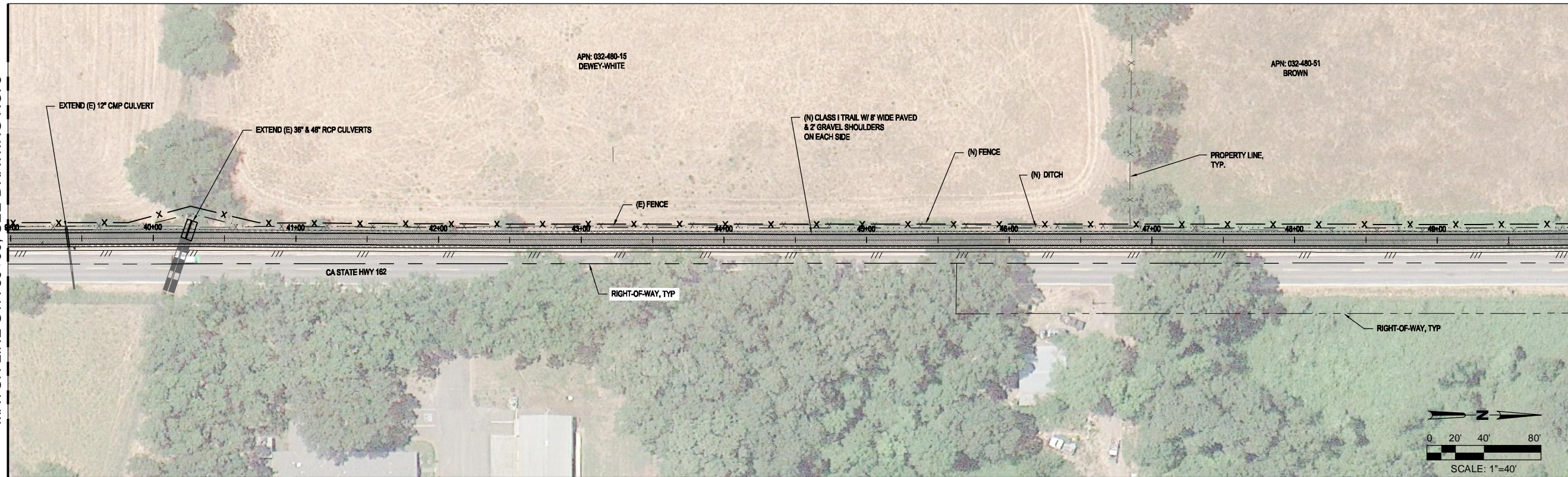
DRAFT

GHD Inc.
 718 Third Street Eureka California 95501 USA
 T 1 707 443 8326 F 1 707 444 8330
 W www.ghd.com

Drawn JJW	Designer JJW
Drafting MP	Design Check MP
Approved (Project Director)	
Date	
Scale ASSHOWN	This Drawing shall not be used for Construction unless Signed and Sealed For Construction

Client	MENDOCINO COUNCIL OF GOVERNMENTS & CALTRANS
Project	COVELO / ROUND VALLEY NON-MOTORIZED NEEDS ASSESSMENT & EFS
Title	HIGHWAY 162 DRAFT TRAIL ALIGNMENT LAYOUT
Contract No.	8410146
Original Size	ANSI D
Drawing No.	3
Rev.	3 of 9

MATCH LINE STA 39+00, SEE DRAWING NO. 3



MATCH LINE STA 50+00, SEE PANEL BELOW

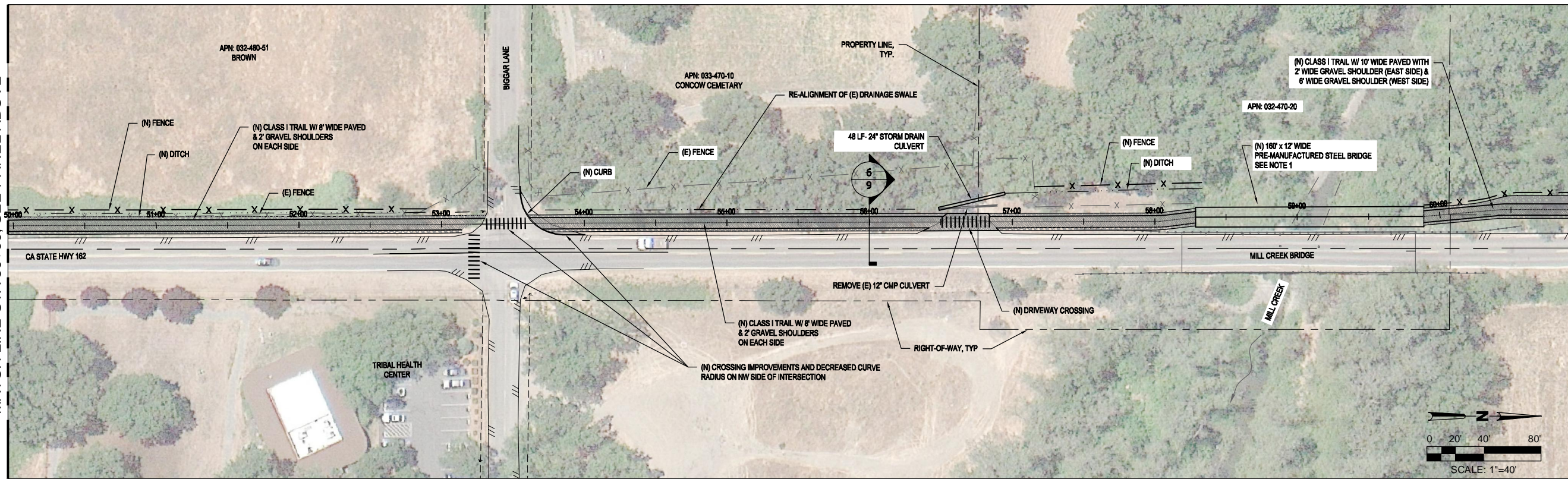
LEGEND

	(N) CURB
	(N) SIDEWALK/ CONCRETE
	(N) CLASS II BIKE LANE
	(N) CLASS I TRAIL
	(N) HIGH VISIBILITY CROSSING
	(N) SIGN
	(N) FENCE
	(E) FENCE
	(E) EDGE OF PAVEMENT
	(E) DITCH
	(N) DITCH

SURVEY NOTES

TOPOGRAPHIC SURVEY, RIGHT-OF-WAY, PROPERTY LINES, OWNERSHIP AND EXISTING FEATURES BY RAU & ASSOCIATES. SEE SURVEY DATED MARCH 2013 FOR DETAILS NOT SHOWN HERE.

MATCH LINE STA 50+00, SEE PANEL ABOVE



MATCH LINE STA 61+00, SEE DRAWING NO. 5

No	Revision	Note: * indicates signatures on original issue of drawing or test revision of drawing	Drawn	Job Manager	Project Director	Date

Reuse of Documents
This document and the ideas and designs incorporated herein, as an instrument of professional service, is the property of GHD Inc. and shall not be reused in whole or in part for any other project without GHD Inc.'s written authorization. © GHD Inc. 2012

FOR REVIEW ONLY

DRAFT

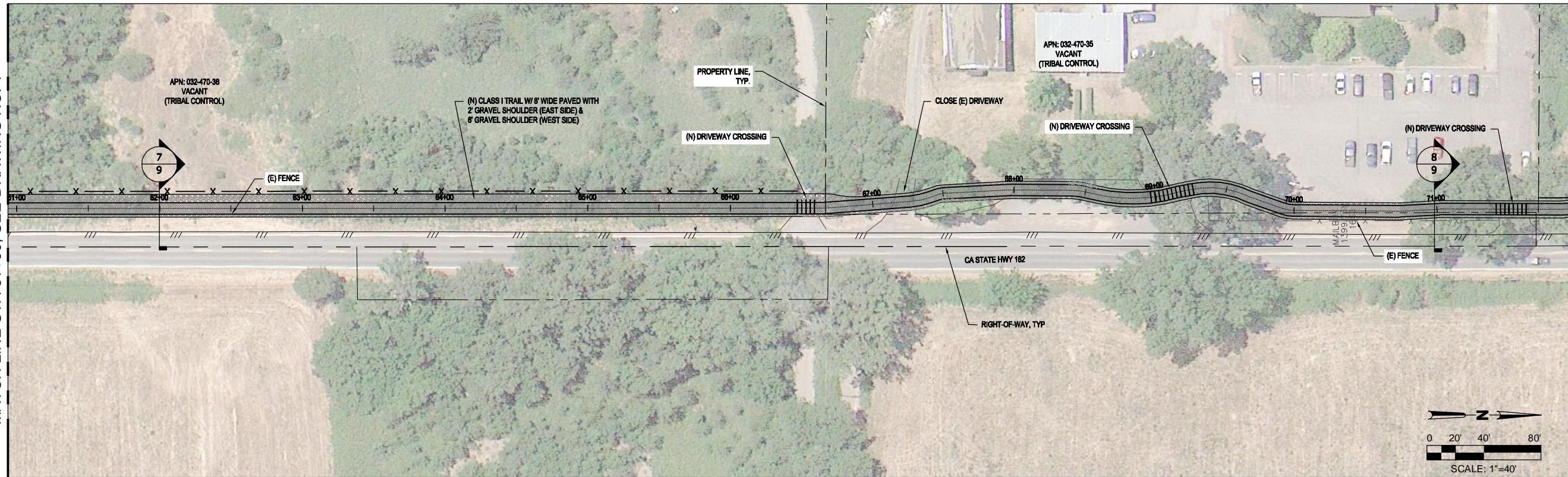
GHD Inc.
718 Third Street Eureka California 95501 USA
T 1 707 443 8326 F 1 707 444 8330
W www.ghd.com

Drawn JJW	Designer JJW
Drafting MP Check	Design Check MP
Approved (Project Director)	Date
Scale ASSHOWN	This Drawing shall not be used for Construction unless Signed and Sealed For Construction

Client **MENDOCINO COUNCIL OF GOVERNMENTS & CALTRANS**
Project **COVELO / ROUND VALLEY NON-MOTORIZED NEEDS ASSESSMENT & EFS**
Title **HIGHWAY 162 DRAFT TRAIL ALIGNMENT LAYOUT**
Contract No. 8410146
Original Size **Ansi D** Drawing No: **4**

Site 4 of 9
Rev:

MATCH LINE STA 61+00, SEE DRAWING NO. 4

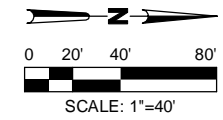
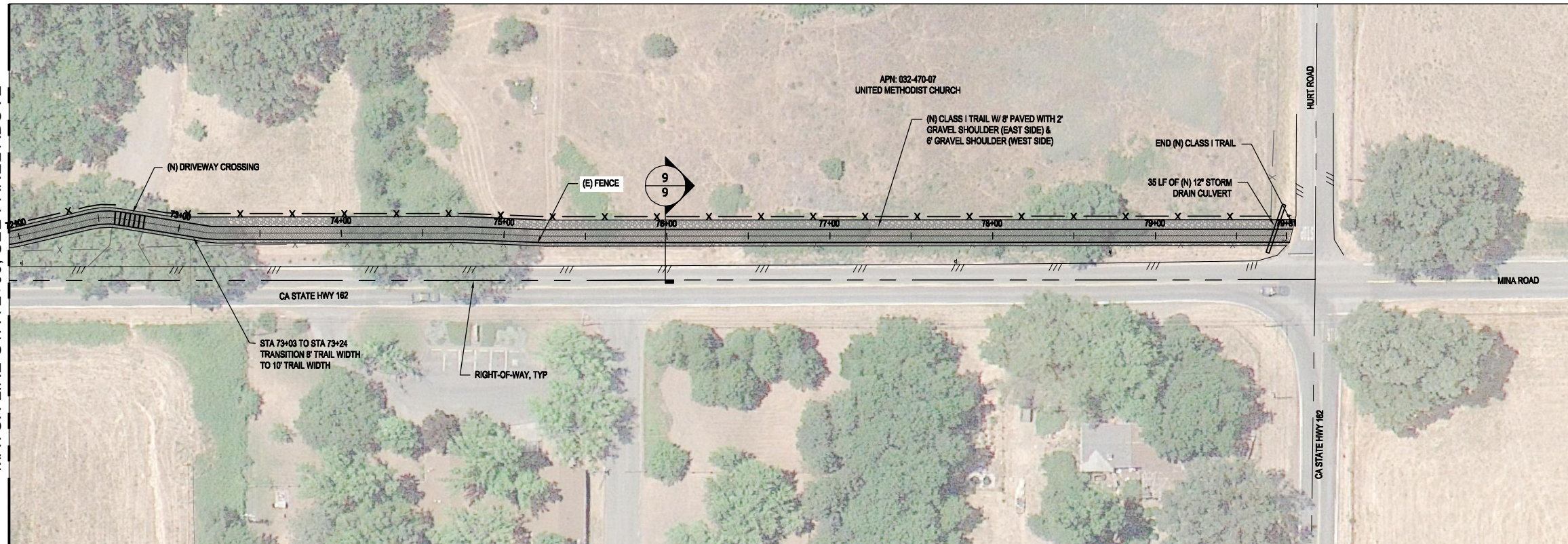


MATCH LINE STA 72+00, SEE PANEL BELOW

LEGEND	
	(N) CURB
	(N) SIDEWALK/ CONCRETE
	(N) CLASS II BIKE LANE
	(N) CLASS I TRAIL
	(N) HIGH VISIBILITY CROSSING
	(N) SIGN
	(N) FENCE
	(E) FENCE
	(E) EDGE OF PAVEMENT
	(E) DITCH
	(N) DITCH

SURVEY NOTES	
TOPOGRAPHIC SURVEY, RIGHT-OF-WAY, PROPERTY LINES, OWNERSHIP AND EXISTING FEATURES BY RAU & ASSOCIATES. SEE SURVEY DATED MARCH 2013 FOR DETAILS NOT SHOWN HERE.	

MATCH LINE STA 72+00, SEE PANEL ABOVE



No.	Revision	Note	Drawn	Job Manager	Project Director	Date
-	-	-	-	-	-	-

Reuse of Documents
 This document and the ideas and designs incorporated herein, as an instrument of professional service, is the property of GHD Inc. and shall not be reused in whole or in part for any other project without GHD Inc.'s written authorization. © GHD Inc. 2012

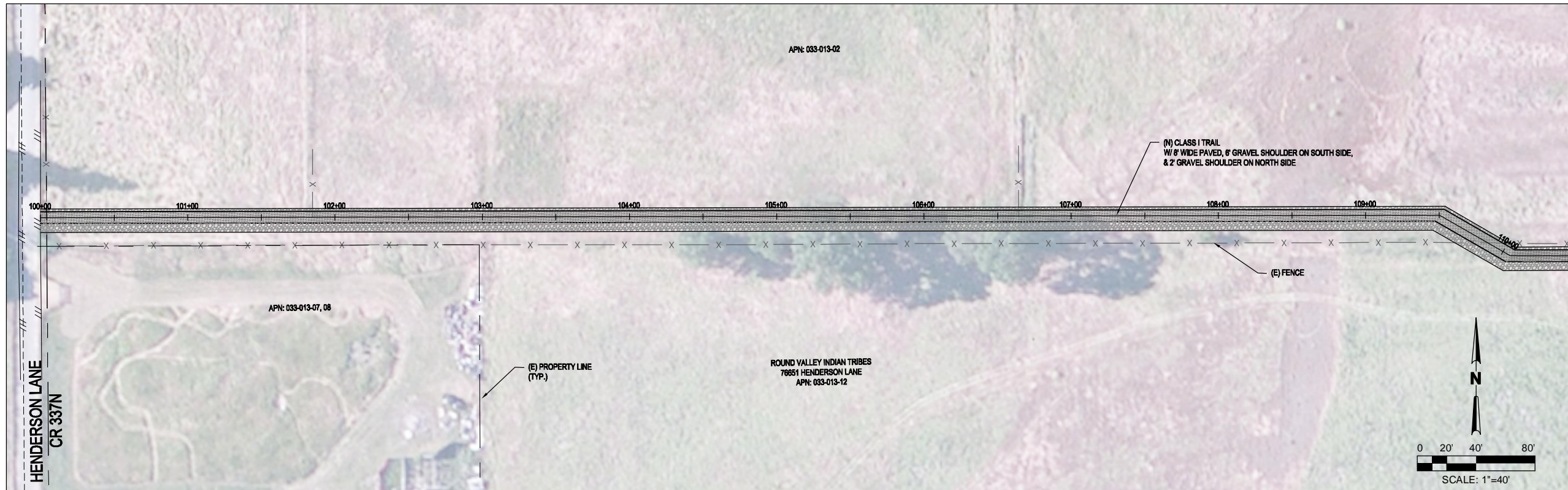
FOR REVIEW ONLY

DRAFT

GHD Inc.
 718 Third Street Eureka California 95501 USA
 T 1 707 443 8326 F 1 707 444 8330
 W www.ghd.com

Drawn JJW	Designer JJW
Drafting MP Check	Design Check MP
Approved (Project Director)	
Date	
Scale ASSHOWN	This Drawing shall not be used for Construction unless Signed and Sealed For Construction

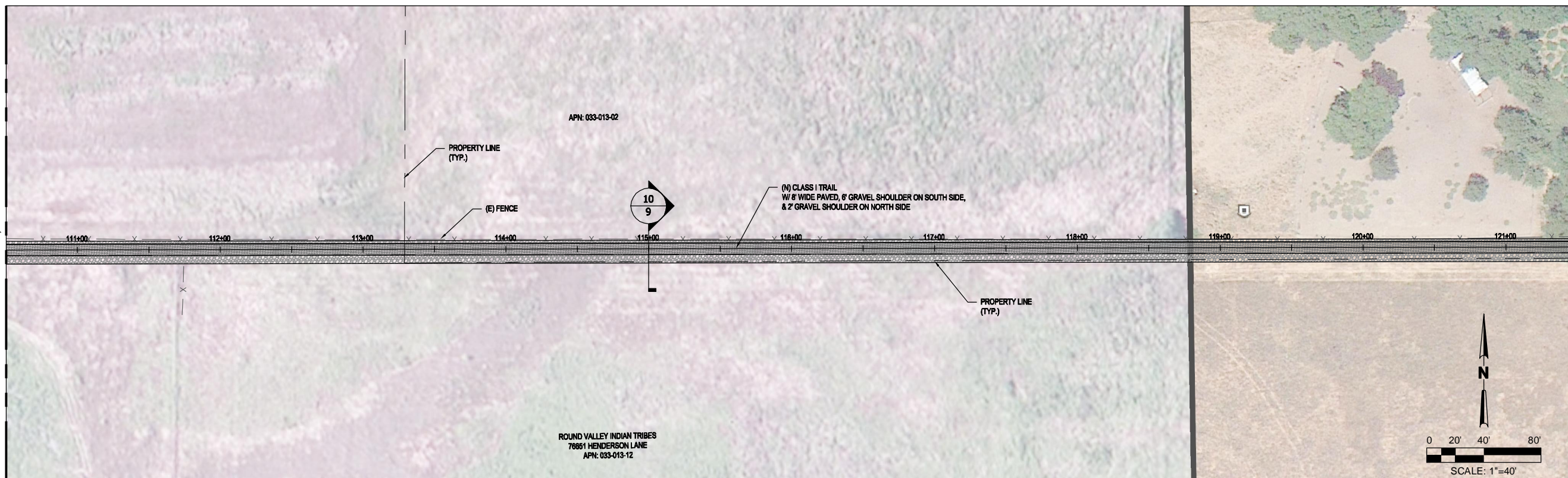
Client	MENDOCINO COUNCIL OF GOVERNMENTS & CALTRANS
Project	COVELO / ROUND VALLEY NON-MOTORIZED NEEDS ASSESSMENT & EFS
Title	HIGHWAY 162 DRAFT TRAIL ALIGNMENT LAYOUT
Contract No.	8410146
Original Size	
Ansi D	Drawing No: 5
Site	5 of 9
Rev:	



LEGEND	
	(N) CURB
	(N) SIDEWALK/ CONCRETE
	(N) CLASS II BIKE LANE
	(N) CLASS I TRAIL
	(N) HIGH VISIBILITY CROSSING
	(N) SIGN
	(N) FENCE
	(E) FENCE
	(E) EDGE OF PAVEMENT
	(E) DITCH
	(N) DITCH

SURVEY NOTES

TOPOGRAPHIC SURVEY, RIGHT-OF-WAY, PROPERTY LINES, OWNERSHIP AND EXISTING FEATURES BY RAU & ASSOCIATES. SEE SURVEY DATED MARCH 2013 FOR DETAILS NOT SHOWN HERE.



MATCH LINE STA 10+50, SEE PANEL ABOVE

MATCH LINE STA 21+50, SEE DRAWING NO. 7

No	Revision	Note: * indicates signatures on original issue of drawing or test revision of drawing	Drawn	Job Manager	Project Director	Date

Reuse of Documents
This document and the ideas and designs incorporated herein, as an instrument of professional service, is the property of GHD Inc. and shall not be reused in whole or in part for any other project without GHD Inc.'s written authorization. © GHD Inc. 2012

FOR REVIEW ONLY

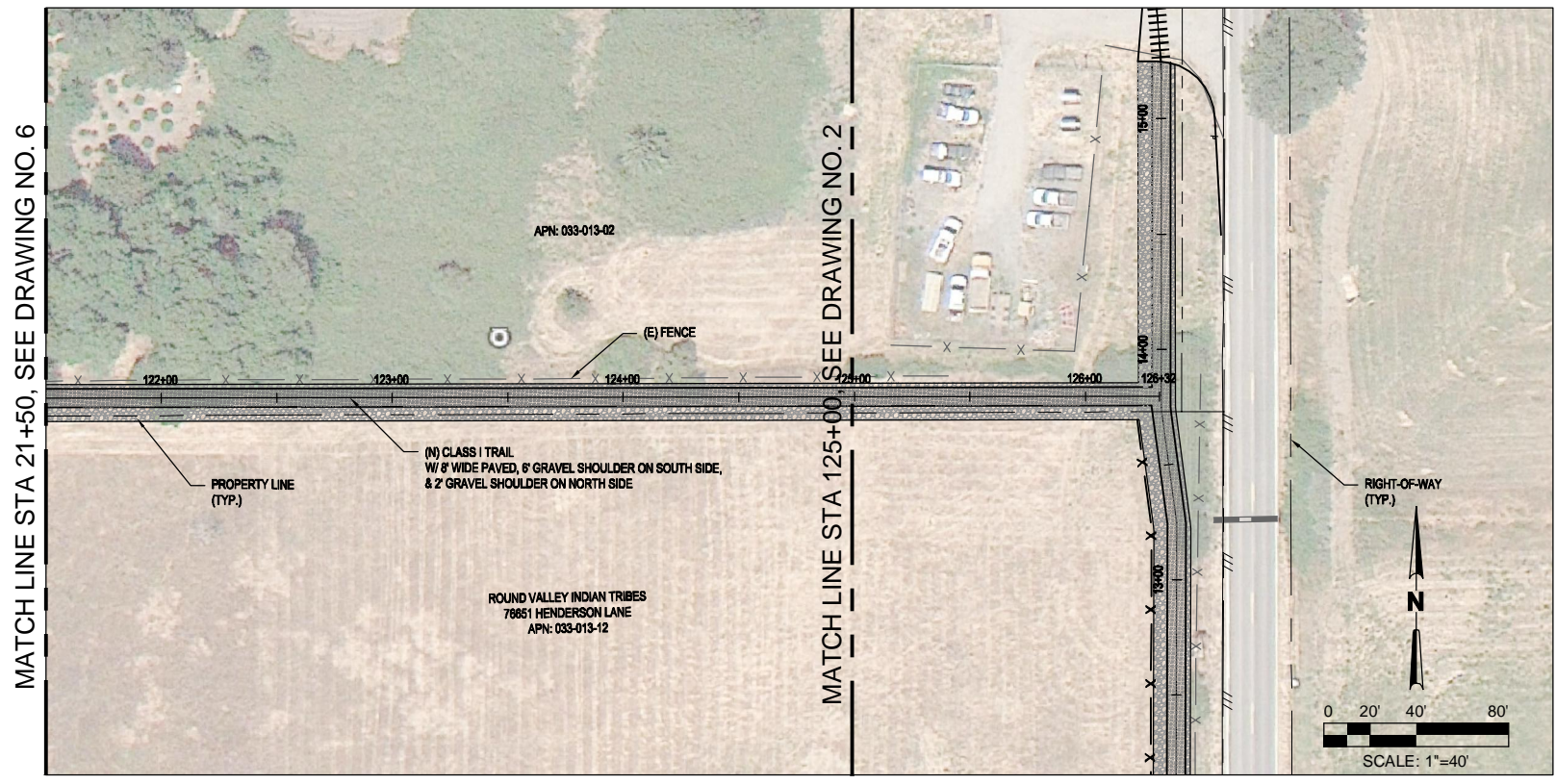
DRAFT

GHD
GHD Inc.
718 Third Street Eureka California 95501 USA
T 1 707 443 8326 F 1 707 444 8330
W www.ghd.com

Drawn JJW	Designer JJW
Drafting MP	Design Check MP
Approved (Project Director)	
Date	
Scale ASSHOWN	This Drawing shall not be used for Construction unless Signed and Sealed For Construction

Client **MENDOCINO COUNCIL OF GOVERNMENTS & CALTRANS**
Project **COVELO / ROUND VALLEY NON-MOTORIZED NEEDS ASSESSMENT & EFS**
Title **CROSS COUNTRY TRAIL**
DRAFT TRAIL ALIGNMENT LAYOUT
Contract No. 8410146
Original Size
Ansi D Drawing No: 6

Site 6 of 9
Rev:

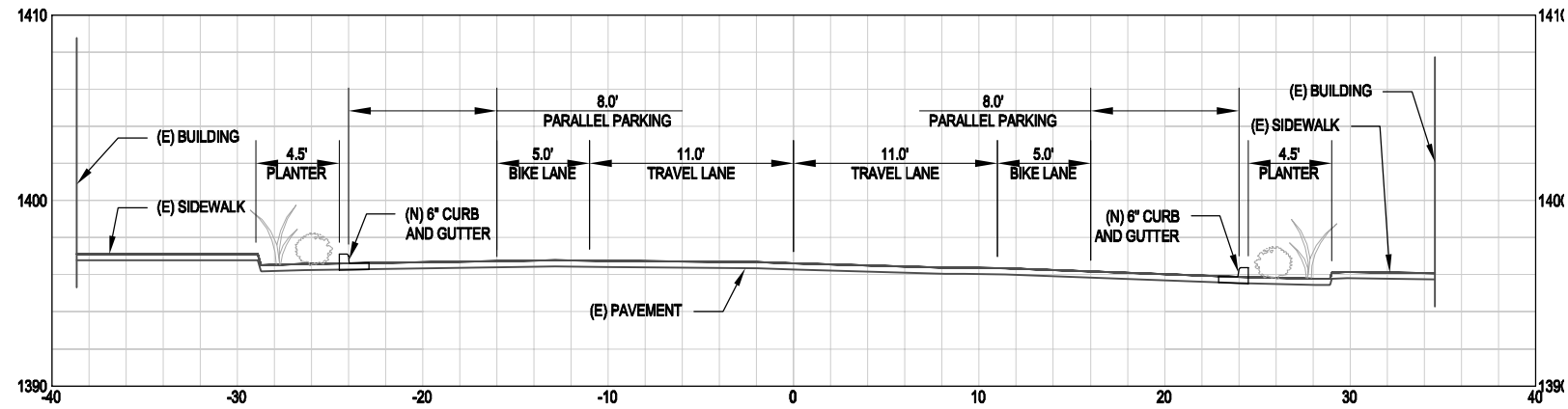


LEGEND	
	(N) CURB
	(N) SIDEWALK/ CONCRETE
	(N) CLASS II BIKE LANE
	(N) CLASS 1 TRAIL
	(N) HIGH VISIBILITY CROSSING
	(N) SIGN
	(N) FENCE
	(E) FENCE
	(E) EDGE OF PAVEMENT
	(E) DITCH
	(N) DITCH

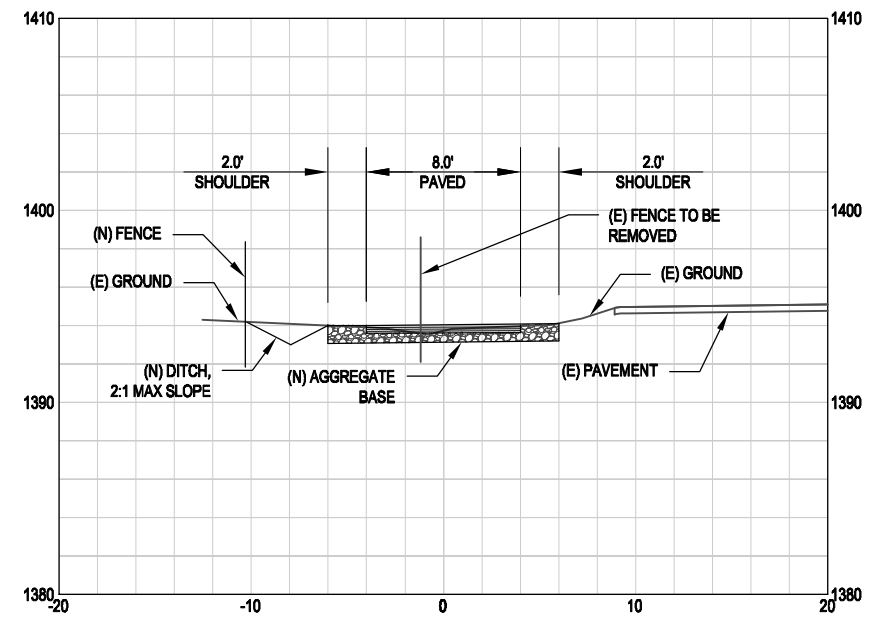
SURVEY NOTES

TOPOGRAPHIC SURVEY, RIGHT-OF-WAY, PROPERTY LINES, OWNERSHIP AND EXISTING FEATURES BY RAU & ASSOCIATES. SEE SURVEY DATED MARCH 2013 FOR DETAILS NOT SHOWN HERE.

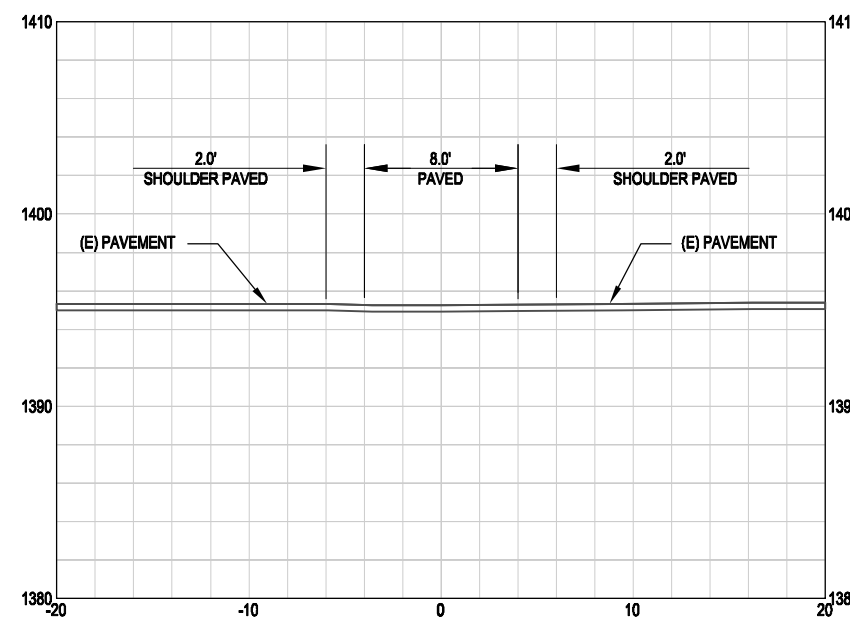
<p>Reuse of Documents</p> <p>This document and the ideas and designs incorporated herein, as an instrument of professional service, is the property of GHD Inc. and shall not be reused in whole or in part for any other project without GHD Inc.'s written authorization. © GHD Inc. 2012</p>						<p style="font-size: 2em; opacity: 0.5;">DRAFT</p> <p>GHD Inc. 718 Third Street Eureka California 95501 USA T 1 707 443 8326 F 1 707 444 8330 www.ghd.com</p>	Drawn JJW	Designer JJW	<p>Client MENDOCINO COUNCIL OF GOVERNMENTS & CALTRANS</p> <p>Project COVELO / ROUND VALLEY NON-MOTORIZED NEEDS ASSESSMENT & EFS</p> <p>Title CROSS COUNTRY TRAIL</p> <p>DRAFT TRAIL ALIGNMENT LAYOUT</p>	
<p>FOR REVIEW ONLY</p>							Drafting MP	Design Check MP		<p>Contract No. 8410146</p> <p>Original Size</p>
<p>No Revision Note: * indicates signatures on original issue of drawing or last revision of drawing</p>							Approved (Project Director)		<p>Scale ASSHOWN</p> <p>This Drawing shall not be used for Construction unless Signed and Sealed For Construction</p>	<p>Site 7 of 9</p> <p>Ans D Drawing No: 7</p> <p>Rev:</p>
<p>Plot Date: 18 October 2013 - 5:18 PM Plotted by: Jesse Wilor</p>						<p>Cad File No: G:\12435 MCOG\8410146 MCOG Covelo Round Valley EFS\06-CAD\Sheets\8410146-TRAIL-LAYOUT.dwg</p>				



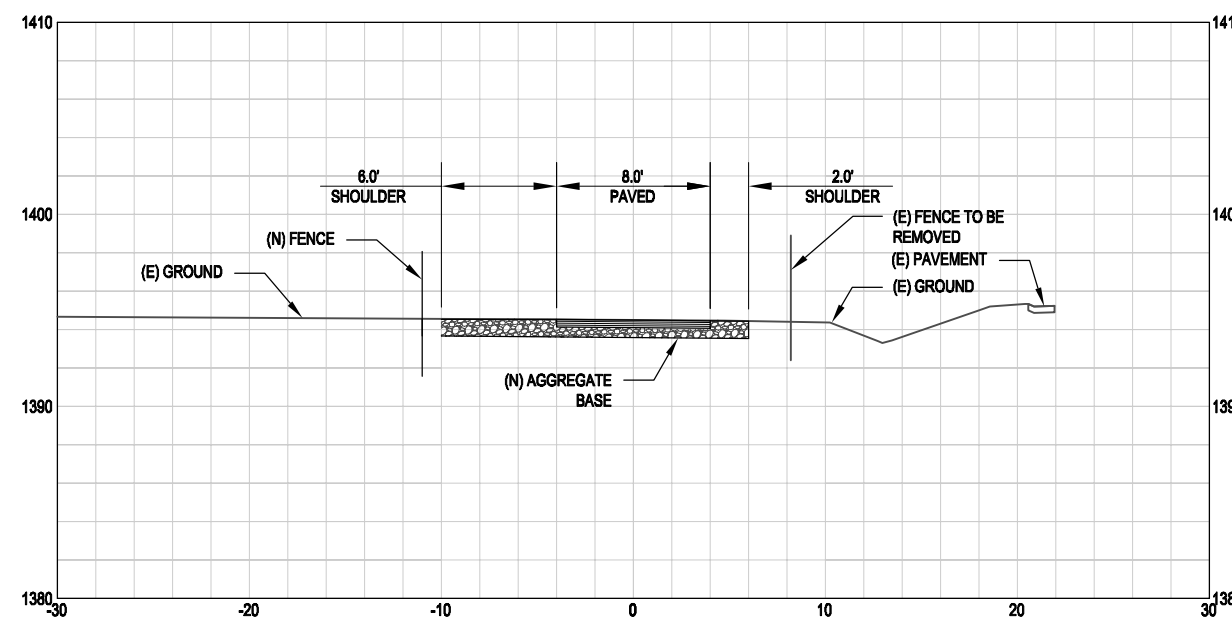
HWY 162
HOWARD ST. TO EAST AVE.
0



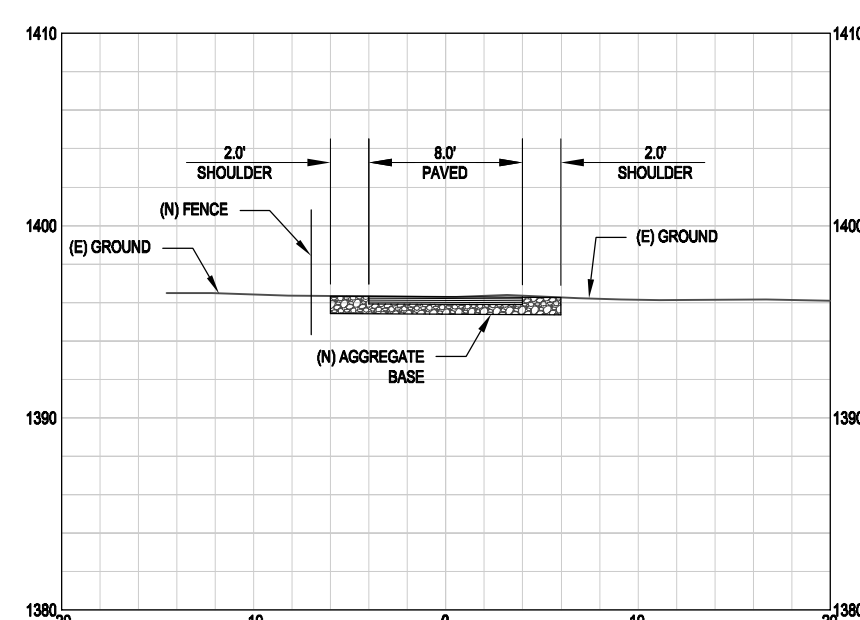
HWY 162
STA 1+61 TO 3+08
2
SCALE: 1" = 5'



HWY 162
STA 0+00 TO 1+61
1
SCALE: 1" = 5'



HWY 162
STA 3+08 TO 13+73
3
SCALE: 1" = 5'



HWY 162
STA 13+73 TO 27+00
4
SCALE: 1" = 5'

No	Revision	Note: * indicates signatures on original issue of drawing or test revision of drawing	Drawn	Job Manager	Project Director	Date
-	-	-	-	-	-	-

Reuse of Documents
This document and the ideas and designs incorporated herein, as an instrument of professional service, is the property of GHD Inc. and shall not be reused in whole or in part for any other project without GHD Inc.'s written authorization. © GHD Inc. 2012

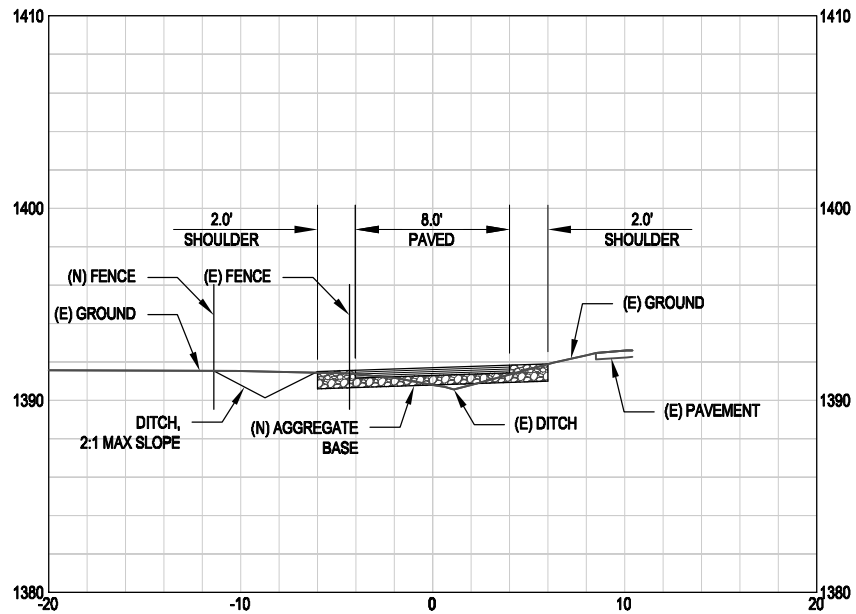
FOR REVIEW ONLY

DRAFT

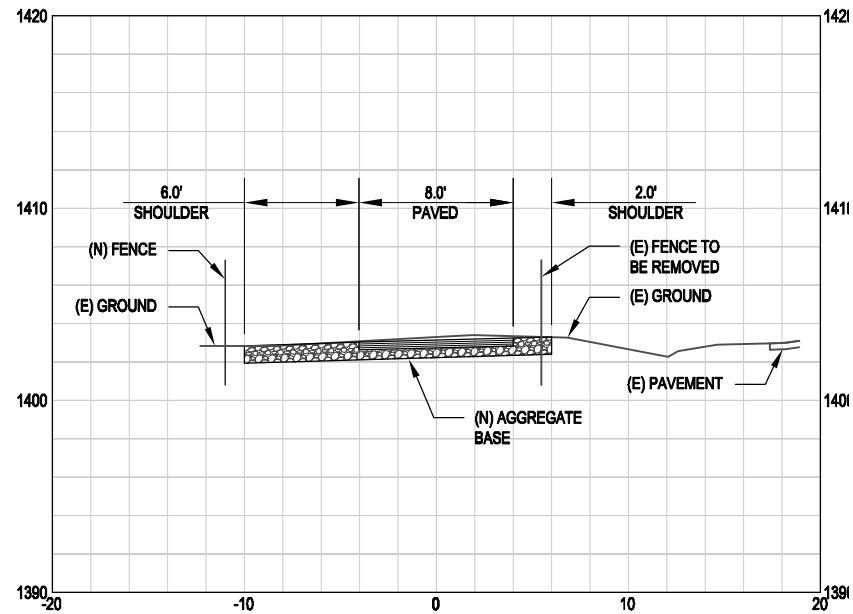


Drawn JJW	Designer JJW
Drafting MP	Design Check MP
Approved (Project Director)	Date
Scale AS SHOWN	This Drawing shall not be used for Construction unless Signed and Sealed For Construction

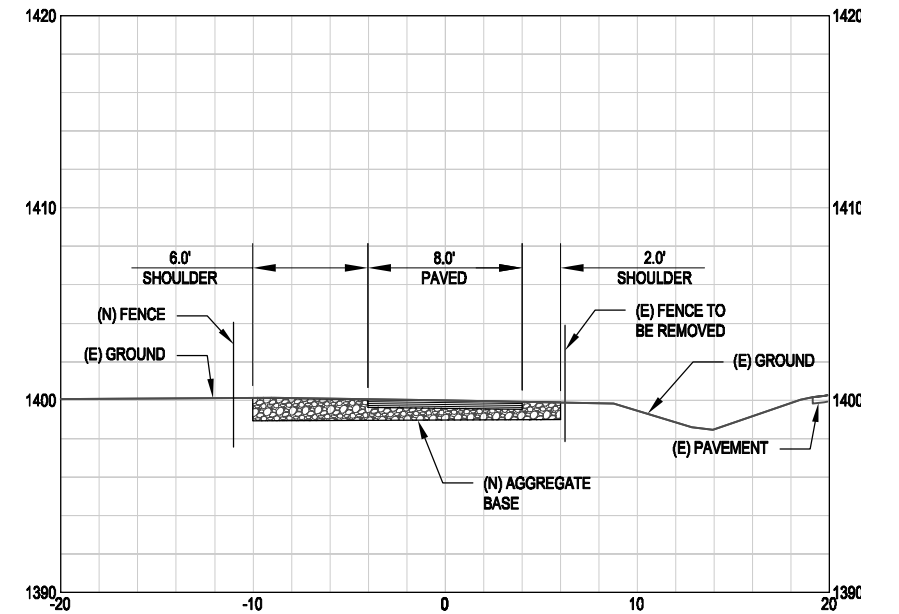
Client **MENDOCINO COUNCIL OF GOVERNMENTS & CALTRANS**
Project **COVELO / ROUND VALLEY NON-MOTORIZED NEEDS ASSESSMENT & EFS**
Title **HIGHWAY 162 DRAFT TRAIL CROSS SECTIONS**
Contract No. 8410146
Original Size
AnsI D Drawing No: 8
Site 8 of 9
Rev:



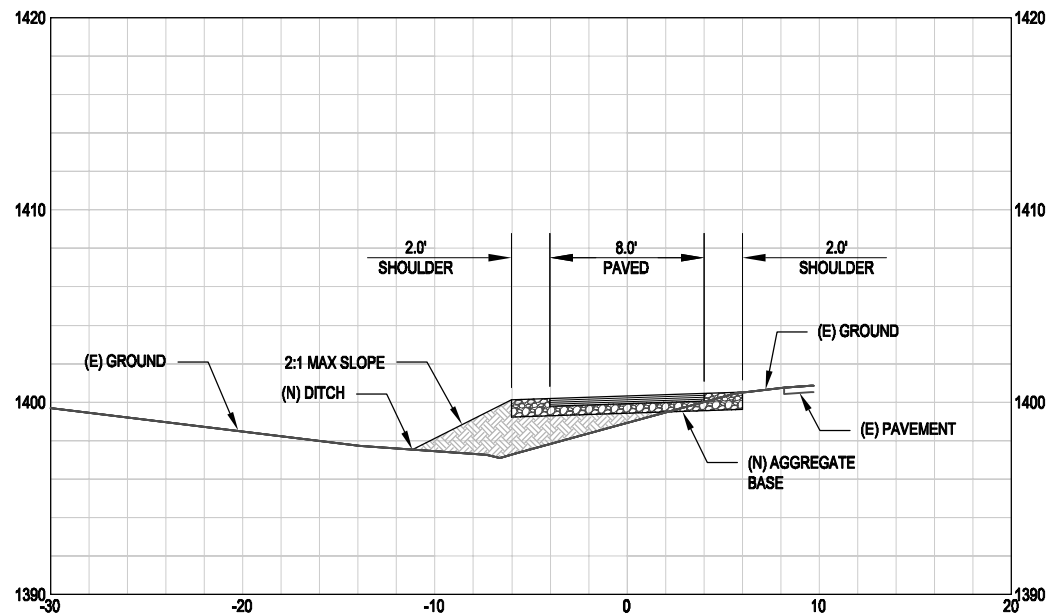
5 HWY 162
STA 27+01 TO 53+28
SCALE: 1" = 5'



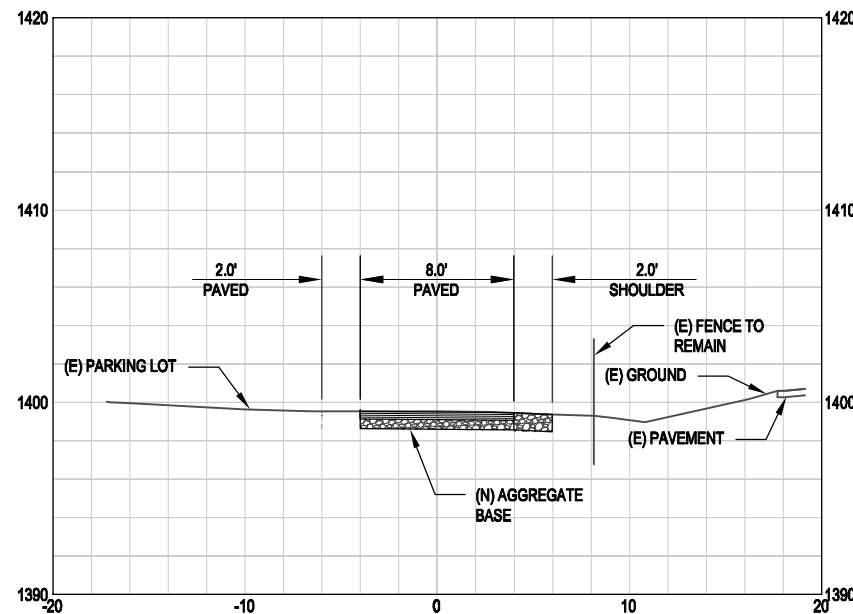
7 HWY 162
STA 60+07 TO 66+67
SCALE: 1" = 5'



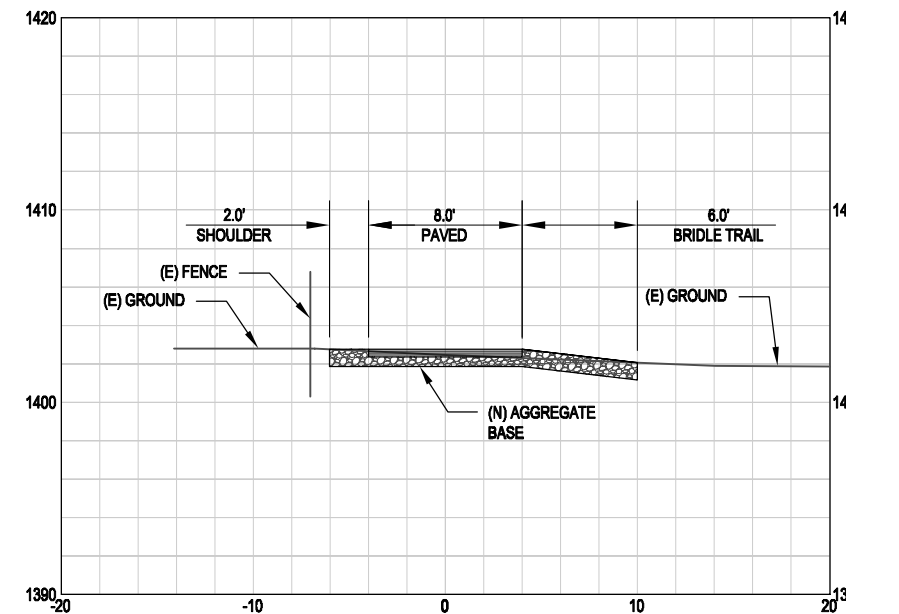
9 HWY 162
STA 71+71 TO 79+81
SCALE: 1" = 5'



6 HWY 162
STA 53+28 TO 56+86
SCALE: 1" = 5'



8 HWY 162
STA 66+67 TO 71+71
SCALE: 1" = 5'



10 EAST - WEST TRAIL
STA 100+00 TO 126+32
SCALE: 1" = 5'

No	Revision	Note: * indicates signatures on original issue of drawing or test revision of drawing	Drawn	Job Manager	Project Director	Date
-	-	-	-	-	-	-

Reuse of Documents
This document and the ideas and designs incorporated herein, as an instrument of professional service, is the property of GHD Inc. and shall not be reused in whole or in part for any other project without GHD Inc.'s written authorization. © GHD Inc. 2012

FOR REVIEW ONLY

DRAFT



GHD Inc.
718 Third Street Eureka California 95501 USA
T 1 707 443 8326 F 1 707 444 8330
W www.ghd.com

Drawn TMD	Designer JJW
Drafting MP	Design Check MP
Approved (Project Director)	
Date	
Scale AS SHOWN	This Drawing shall not be used for Construction unless Signed and Sealed For Construction

Client	MENDOCINO COUNCIL OF GOVERNMENTS & CALTRANS
Project	COVELO / ROUND VALLEY NON-MOTORIZED NEEDS ASSESSMENT & EFS
Title	HIGHWAY 162 AND EAST - WEST DRAFT TRAIL CROSS SECTIONS
Contract No.	8410146
Original Size	Ansi D
Drawing No.	9
Site	9 of 9
Rev:	