

# Gualala Downtown Streetscape Enhancement Project

**Mendocino Council of Governments Board Meeting**

April 5, 2021

1:30 PM

# Introductions

- ▶ MCOG Executive Director, Nephele Barrett
- ▶ Frank Demling, Caltrans Project Manager
- ▶ Elias Karam, Caltrans Design Senior
- ▶ Liza Walker, Caltrans Senior Environmental Planner

## Presentation Overview

- ▶ Purpose and Need
- ▶ New Project Alternative 4
  - ▶ Project Alternative 4A
  - ▶ Project Alternative 4B
- ▶ Public Survey
- ▶ Project Funding
- ▶ Questions



# Project Purpose and Need

- ▶ Create safe and comfortable facilities for pedestrian and bicycle travel and improve traffic flow.
- ▶ Reduce conflicts between motorized and non-motorized users
- ▶ Improve visual character by incorporating landscape and hardscape features





# Project Location



Map representing the Gualala Downtown Streetscape Project

# New Project Alternatives

# New Project Alternatives

7

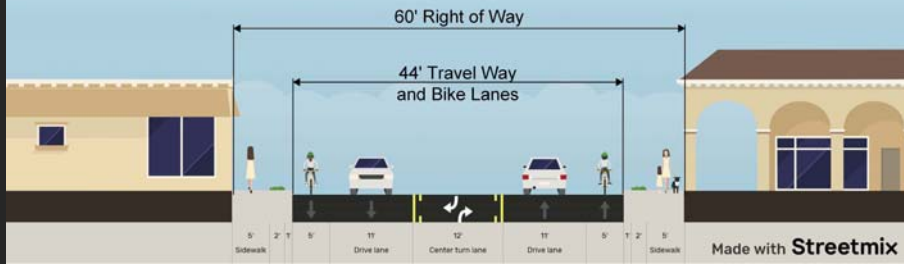
**Initial Construction Project**, “Hybrid Center Turn Lanes with limited on-street parking”

**Alternatives 4A & 4B**, Center turn lanes along the south part of town with parking along the east or west sides of SR-1 at the north end of town.

# Project Alternative 4A & 4B



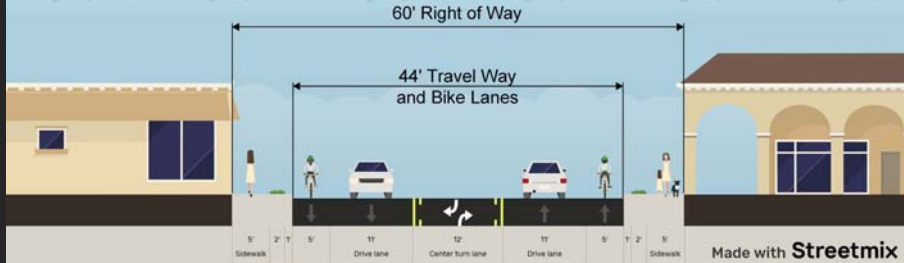
**ALT 4A - CENTER ST. TO CHURCH ST.**



**ALT 4A - CHURCH ST. TO OCEAN DR.**



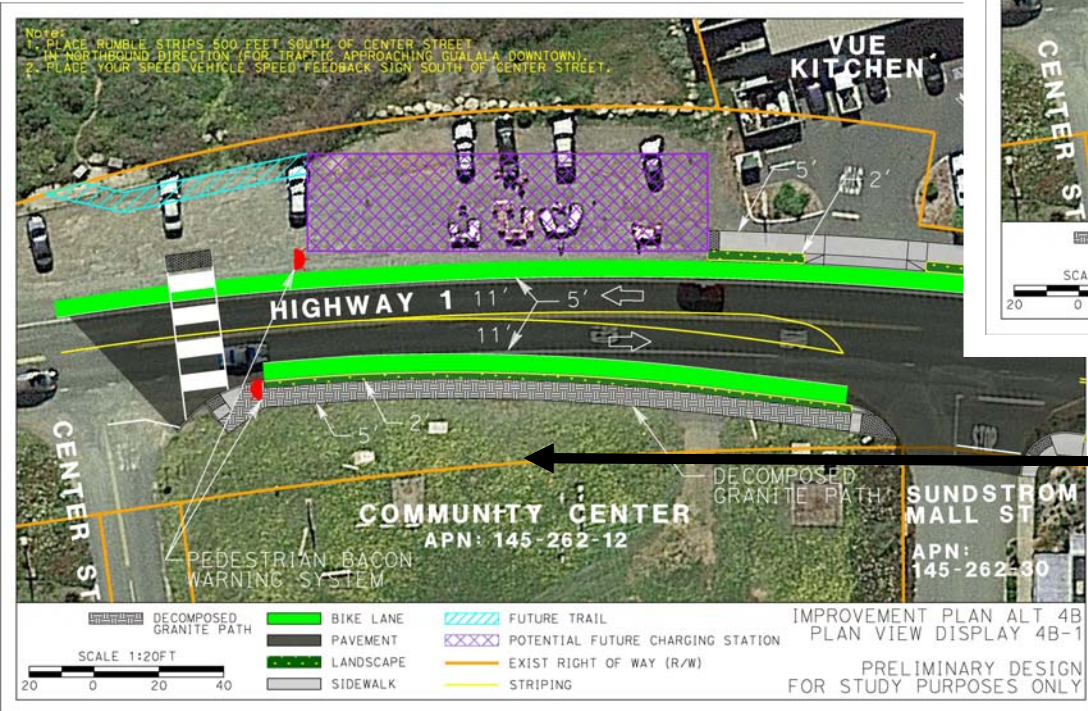
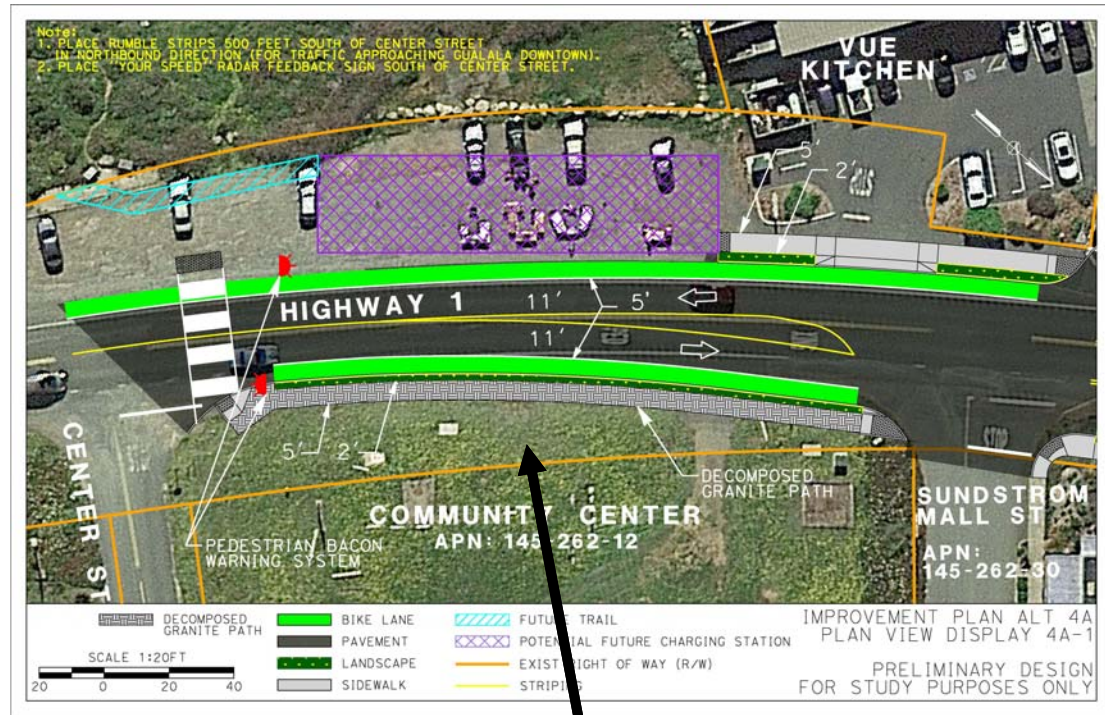
**ALT 4B - CENTER ST. TO CHURCH ST.**



**ALT 4B - CHURCH ST. TO OCEAN DR.**



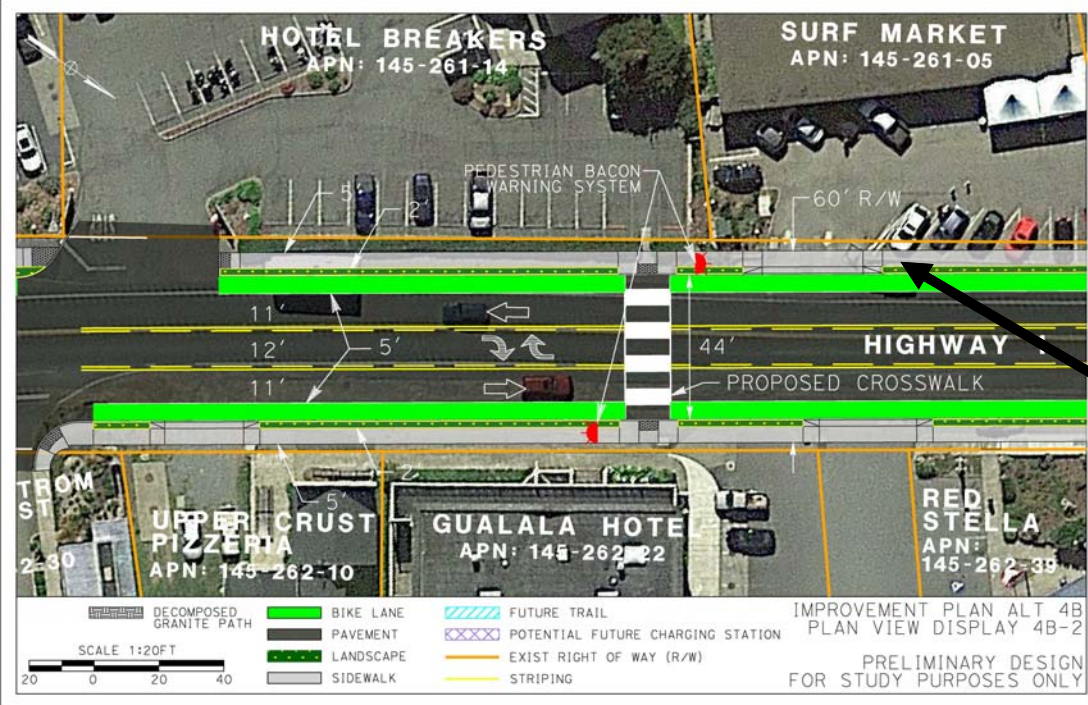
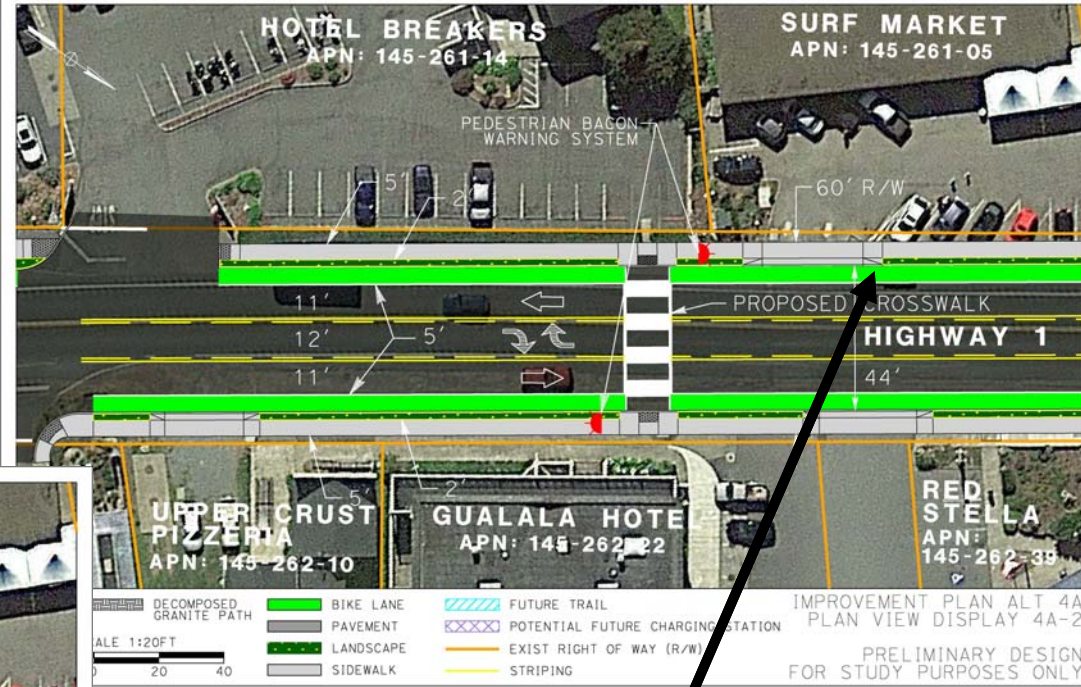
# Alternatives 4A & 4B Sheet 1 of 5



Community asked if large vehicle parking is possible in front of community center.  
Design team analyzing impacts.



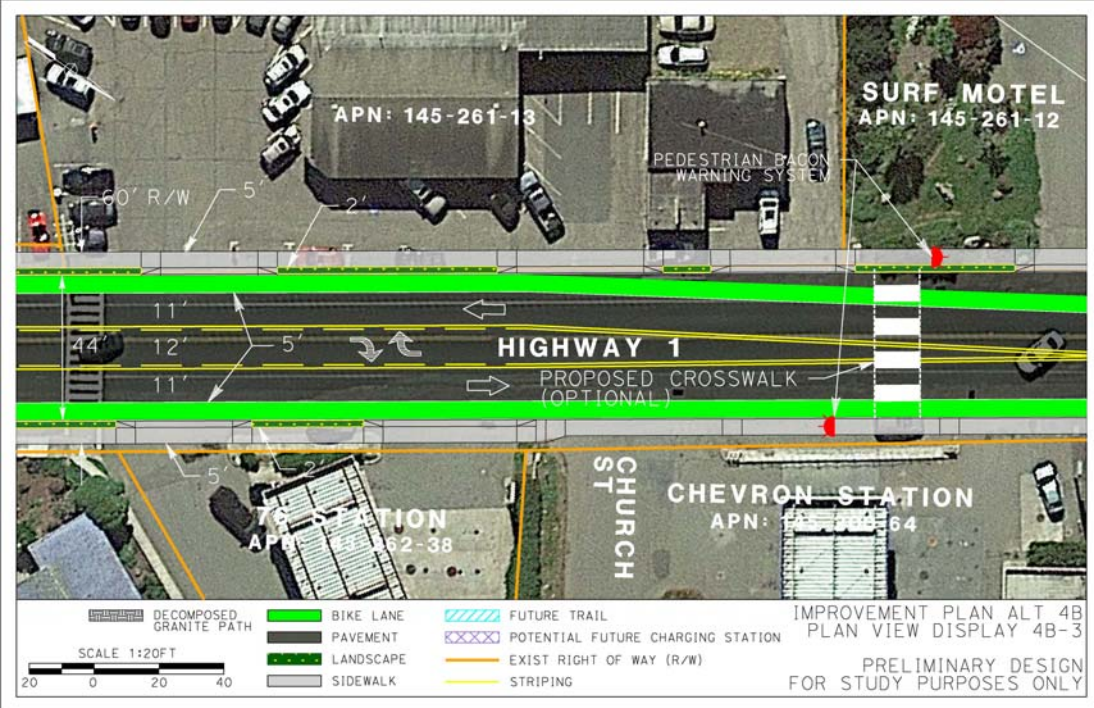
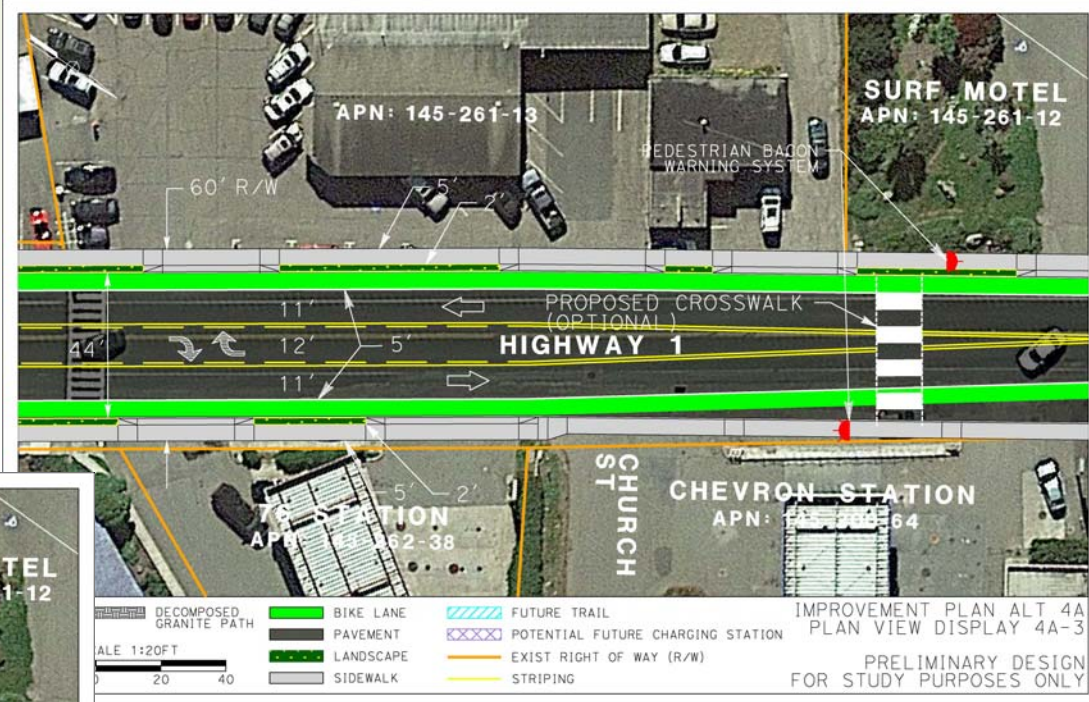
# Alternatives 4A & 4B Sheet 2 of 5



Community requested if parking can be considered in front of SURF MARKET. Option 4C may be explored to assess feasibility. Design team analyzing impacts.

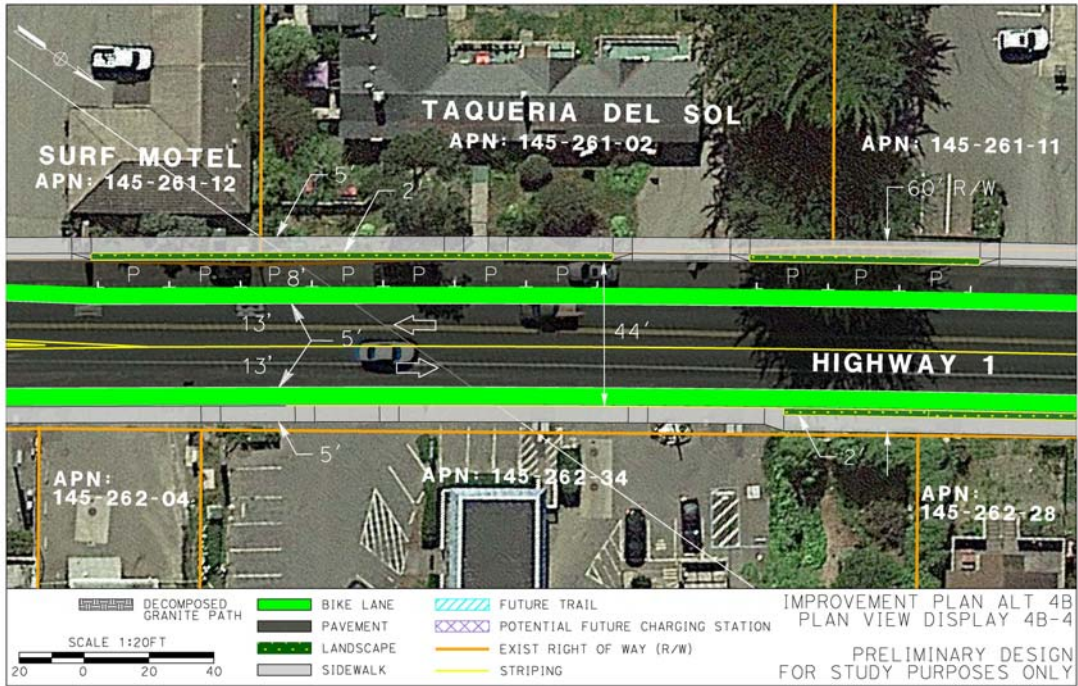


# Alternatives 4A & 4B Sheet 3 of 5





# Alternatives 4A & 4B Sheet 4 of 5



IMPROVEMENT PLAN ALT 4A  
PLAN VIEW DISPLAY 4A-4  
PRELIMINARY DESIGN  
FOR STUDY PURPOSES ONLY

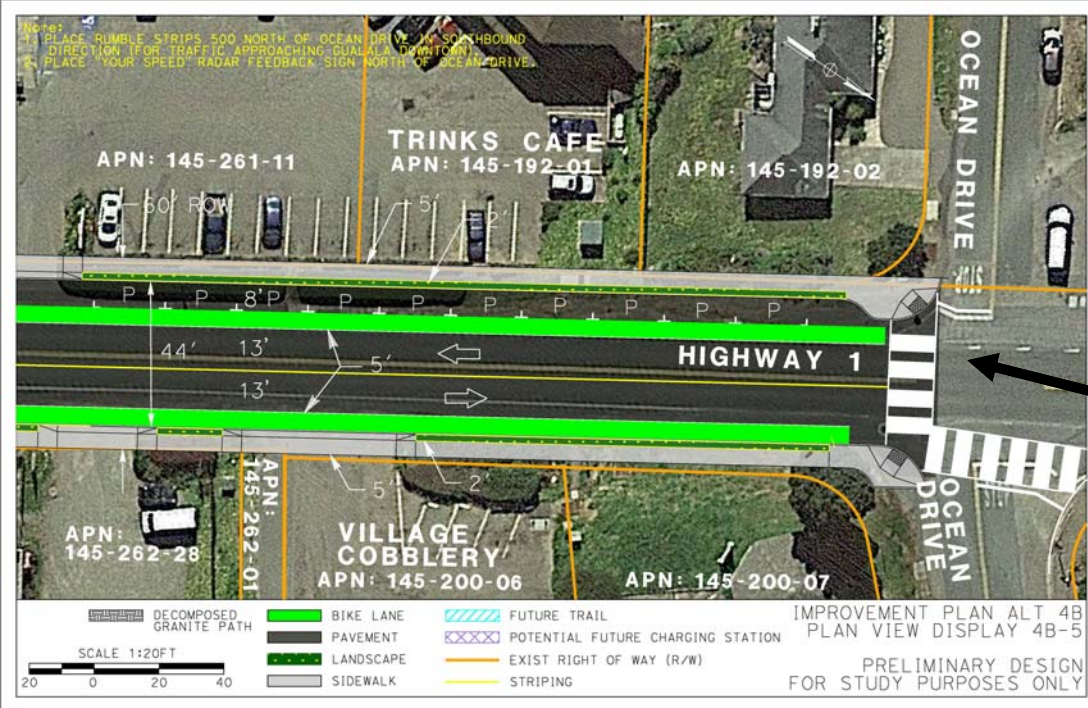
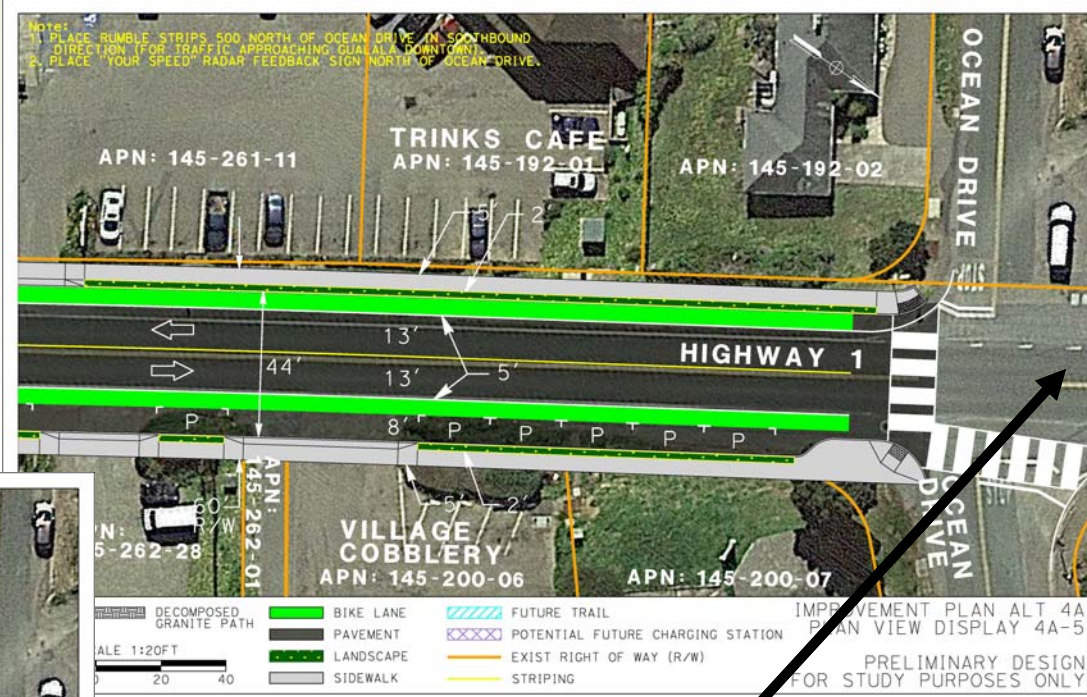
DECOMPOSED GRANITE PATH	BIKE LANE	FUTURE TRAIL
PAVEMENT	POTENTIAL FUTURE CHARGING STATION	EXIST RIGHT OF WAY (R/W)
LANDSCAPE	STRIPING	
SIDEWALK		

IMPROVEMENT PLAN ALT 4B  
PLAN VIEW DISPLAY 4B-4  
PRELIMINARY DESIGN  
FOR STUDY PURPOSES ONLY

DECOMPOSED GRANITE PATH	BIKE LANE	FUTURE TRAIL
PAVEMENT	POTENTIAL FUTURE CHARGING STATION	EXIST RIGHT OF WAY (R/W)
LANDSCAPE	STRIPING	
SIDEWALK		



# Alternatives 4A & 4B Sheet 5 of 5



Community requested feasibility of SB Hwy 1 left turn lane onto Ocean Drive.  
Design team assessing feasibility.

# Public Survey



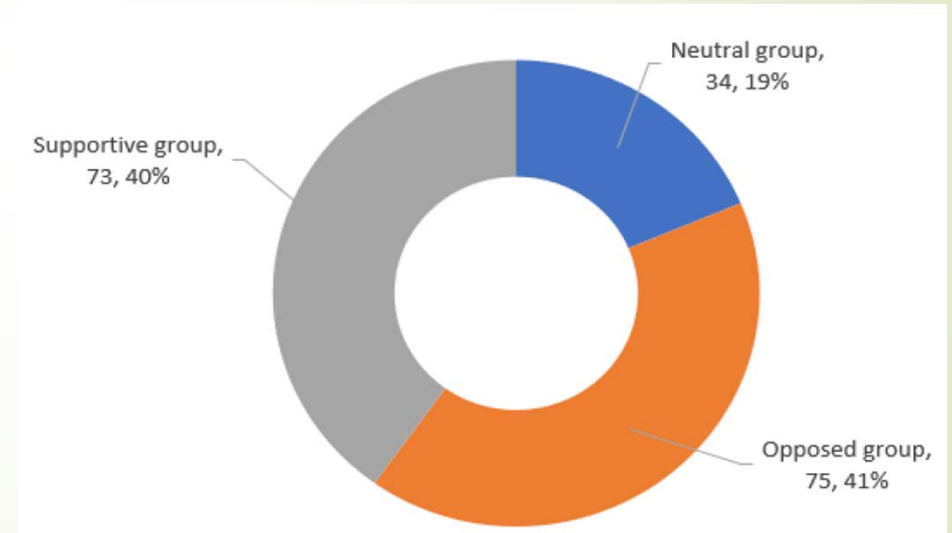
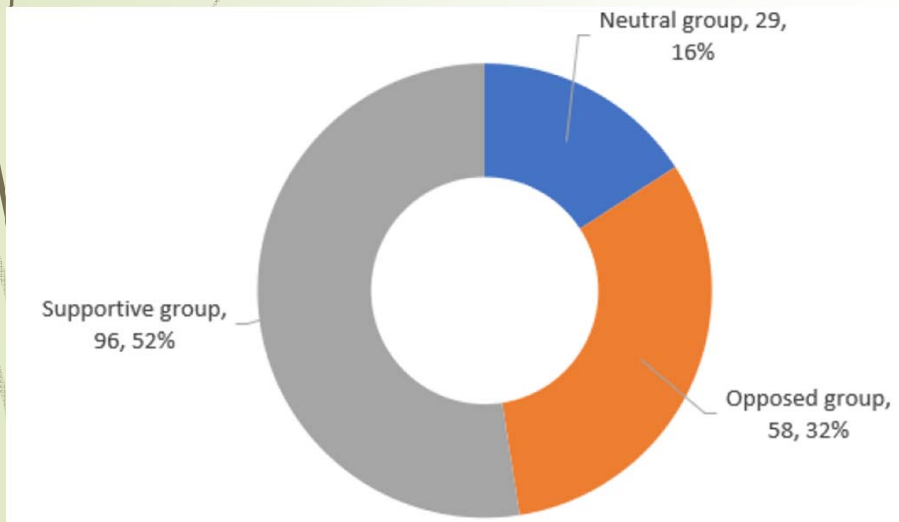
# Public Survey

- ▶ 189 responses
- ▶ 89.4% of respondents identified themselves as south coast residents
- ▶ Full survey results are available at: <https://dot.ca.gov/caltrans-near-me/district-1/d1-projects/d1-gualala-downtown-streetscape-enhancement>

# Support for Continuous Two Way Left Turn Lane

Center Street to Church Street – 52% Support, 32% Oppose

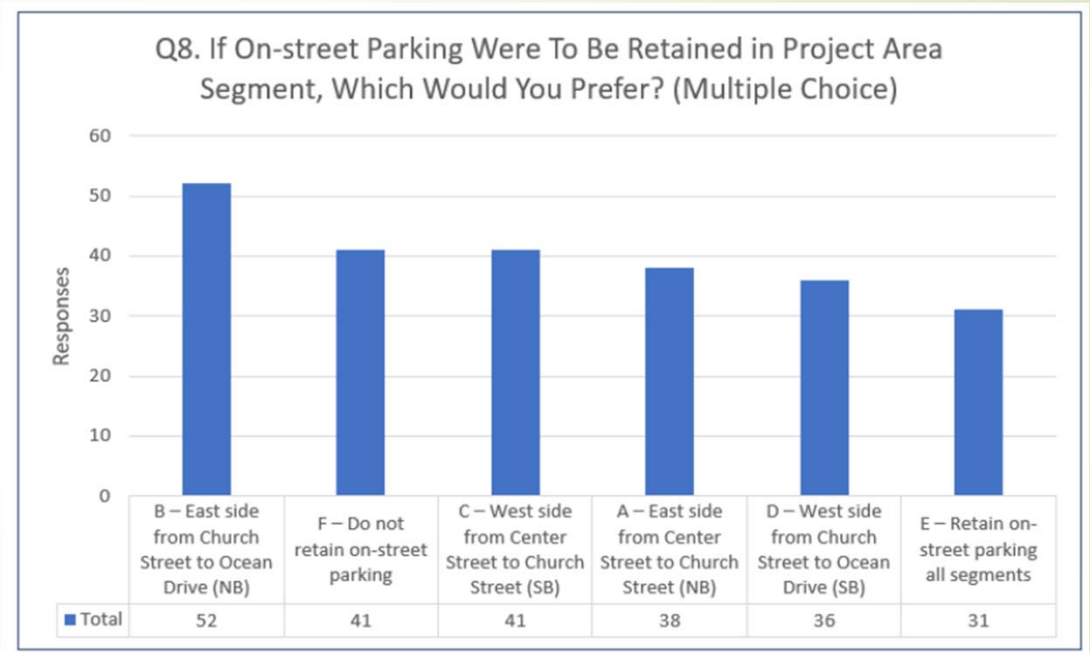
Church Street to Ocean Ave – 40% Support, 41% Oppose





# Support for On-street Parking

- If on-street parking were to be retained, where should it be? Multiple answers allowed.
- 23% prefer no parking
- Remaining respondents want parking retained for some or all of the project. Support for specific locations varies, but the most supported location is between Church and Ocean on the East side of the highway.

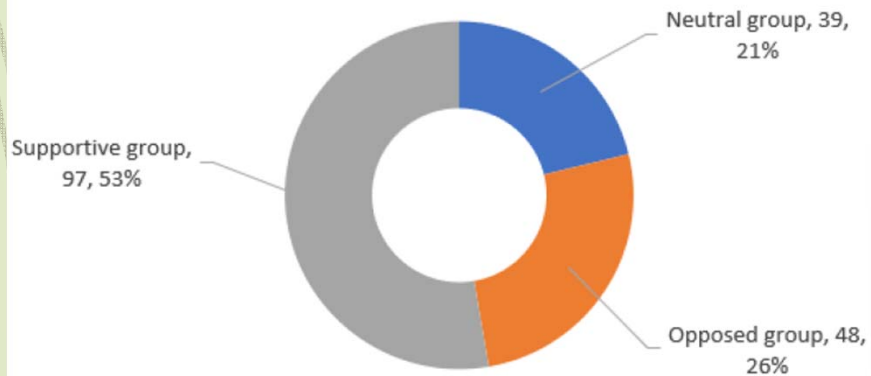




# Support for Bike & Ped Facilities

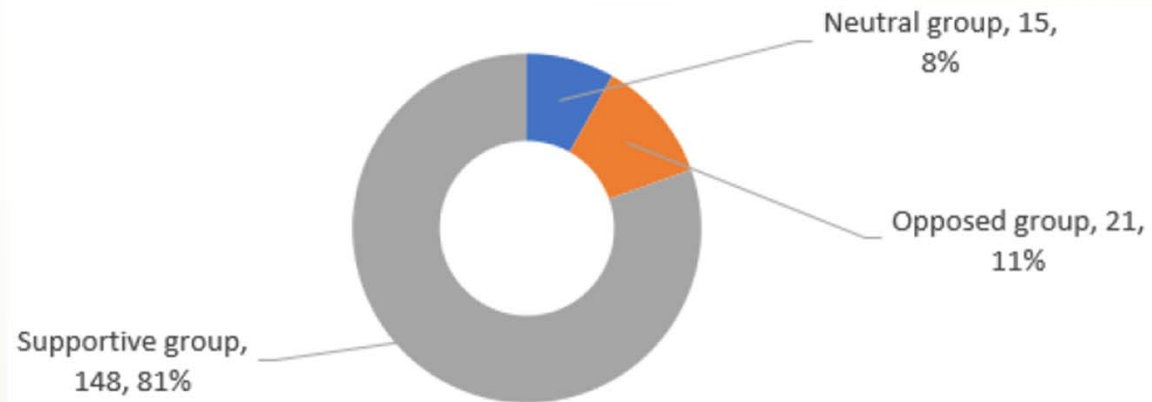
## Class II Bike Paths on both sides

- 53% support, 21% neutral, 26% oppose



## Continuous 5-foot wide sidewalks on both sides

- 81% Support, 8% neutral, 11% oppose



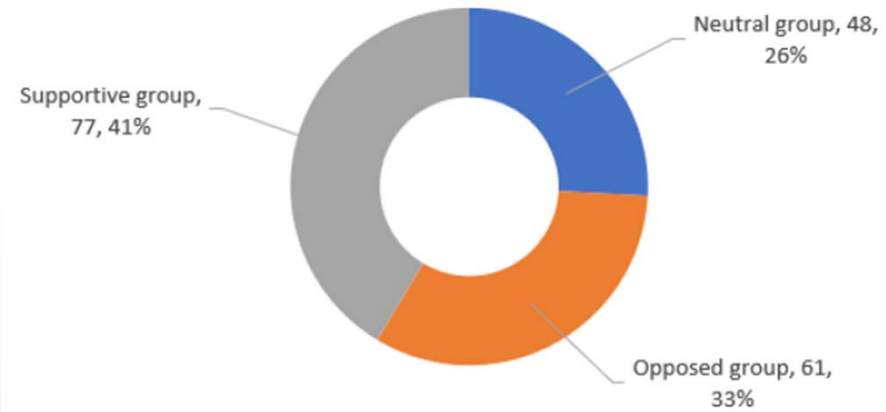
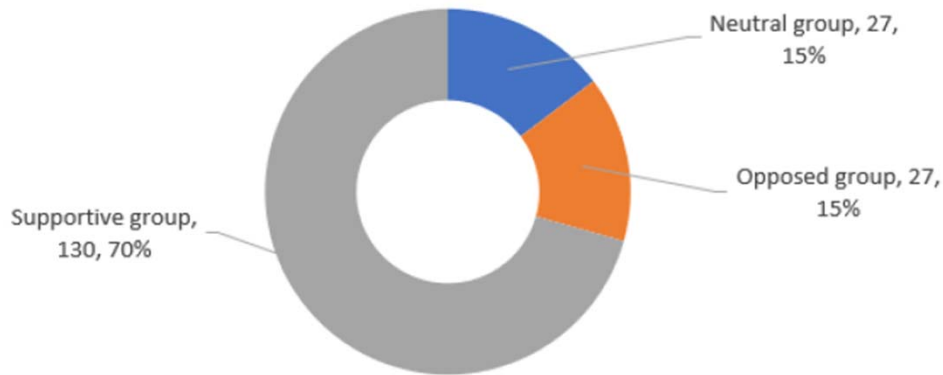
# Support for Project Enhancements

## ■ Landscaping

- 70% Support, 15% neutral, 15% oppose

## ■ Bollard Lighting

- 41% Support, 26% Neutral, 33% Oppose





# Support for Project Alternatives

- Alt 4 (presented at public meeting) – 61% support, 5% neutral, 34% oppose
- Gualala Town Plan (80 ft ROW, no parking) – 21% support, 14% neutral, 65% oppose
- No build – 21% support, 4% neutral, 75% oppose

# Project Funding



# Project Funding

- ▶ Current programming in STIP:
  - ▶ \$340,000 PA&ED
  - ▶ \$575,000 PS&E
  - ▶ \$900,000 ROW
  - ▶ Additional funds “reserved” up to \$3,050 m. to cover non-ATP eligible portions of CON if needed





## Project Funding (cont.)

- ▶ Active Transportation Program grant application was unsuccessful.
  - ▶ Asked for \$7.224 million for CON and project development
- ▶ Future funding options:
  - ▶ Reapply for ATP – call for projects next year
  - ▶ STIP programming – potential funding shortfall in 2022 STIP
  - ▶ Complete Streets funding in the SHOPP
  - ▶ Stimulus – time constraints could be a problem

# Questions & Answers



# Thank You

[dot.ca.gov/gualaladowntown](http://dot.ca.gov/gualaladowntown)